

 carisa®
designer radiators



2021

The World is changing, also heating technology...

We live in a world where adding value is crucial and increasingly difficult to achieve. Value can be added if you or what you possess contains elements of unrivalled aspiration.

Design and technology are two important tools for gaining such additional value. In life and in business, building competitive advantage in our increasingly fast moving, information rich world of global access is not easy and technology alone is not always sufficient. Today's leaders have gone beyond using technology for its own sake and instead have simplified how we deliver the technology to consumers in a desirable and easy to use format.

Design led businesses use design to create distance between themselves and their competitors. This gives their customers compelling reasons to purchase their products and as such businesses cannot stand still. They constantly strive to find better ways to deliver knowing this leadership is their competitive advantage.

At Carisa we are constantly striving to deliver unique designs using cutting edge technology and new materials. Carisa is a UK brand distributed by Carisa Radiators Ltd that utilises innovation and design to drive the heating market. Carisa is created by our experienced research and development team who have led the heating market for over 45 years. All Carisa products are designed, manufactured and 100% built by our own people in our own factories in Istanbul.

Carisa are proud to announce the launch of Carisa Russia. We now have a class leading showroom and distribution business based in the centre of Moscow. Take a look at www.carisa.ru

The Carisa range of Designer radiators, towel rails and accessories combine the latest trends and technological ideas to deliver beautiful, functional and desirable pieces of art for your home. Our products adorn homes, hotels and other commercial and architectural projects around the world. Carisa offers an unrivalled range in terms of sizes, design and colour optional and along with our bespoke product service offers you the customer truly endless options.

Choose the best in life.....Choose CARISA.

45 Years of Innovation



Why Carisa?

WHY CHOOSE CARISA ALUMINIUM DESIGN RADIATORS?

Weight, high thermal conductivity and longevity of service are just a few things that makes Carisa aluminium products a must.

WEIGHT

As it is 70 % lighter than mild steel it helps reduce unnecessary weight on none structural walls.

HIGH PRESSURE CAPACITY

Due to our manufacturing techniques they are safe to use under water pressures beyond those normally encountered in the UK and Europe.

SMOOTH SURFACE

The trio paint technology and anodised coating of our products have longevity and are easy to clean and maintain.

UNIQUE DESIGN

Our designs speak for themselves. They achieve, style and grace in any situation.

COLOUR OPTIONS

Available in many different colour options, anodised and even a range of wooden wrap finishes.

CONSTRUCTION

The combination of exciting extruded shapes together with our jointing system guarantees a long life span.

CUSTOM OPTIONS

Don't limit yourself to our already extraordinary range of sizes and shapes. We can manufacture sizes from 200mm to 3000mm high and up to 3000mm wide delivering a truly bespoke service.

CUSTOM CONNECTIONS

We build our products with multiple pipe connection options for ease of installation. We also offer a fully customised service for those difficult situations.

ENVIRONMENTALLY FRIENDLY

100% recyclable and low water content means lower energy costs and up to 26% greater performance than a comparable steel radiator.

HIGH QUALITY



WHY CARISA STAINLESS STEEL DESIGNER RADIATORS?

The worlds best radiator designers use world class materials and there are few better materials than stainless steel. The knowledge that your radiator is protected from defects and corrosion together with our longer product guarantees leaves you feeling warm on the inside as well as the outside.

Whether the material is highly polished mirror like surface or brush treated, Stainless Steel radiators offer the best of both worlds. Beautiful modern design combined with the fortitude and quality to stand the test of time.

Our range of towel warmers and radiators are all made from 100% Stainless Steel. There is no additional finish to corrode, flake or discolour. Simple cleaning is all that is required.

Our Stainless Steel is made from 90% recycled material and the product itself is 100% recyclable.

Carisa's range of products are finished to the highest standard and will last a life time. We use only 304 grade Stainless Steel with 316 welds. Manufactured in a totally hygienic environment, you can rest assured you are making an ethical and durable choice.

Carisa's design team has created a broad yet unique range of products, which are sure to enhance any interior.

Only the highest grade solid Stainless Steel is used by Carisa Designer Radiators. All joints are welded using advanced 'TIG' welding technology and Argon gas to avoid leakage. All Carisa products are tested to at least 13 bars of pressure and a pickling passivation process is applied to all products following the welding process.

All radiators are hand made by skilled Artisans and each process is carefully quality controlled ensuring you receive only the very best products.

Carisa has been manufacturing Stainless Steel radiators for almost 20 years.

WHY FLAT STEEL DESIGNER RADIATORS?

Carisa keeps on innovating! Our striking new ultra slim steel panel radiators are special in many ways.

They are only 7mm thick but still perform beyond expectations.

They feature 50mm central connections ideal for separate valves or the monoblock valves which are becoming more popular.

A range of towel bar accessories are available to 'upgrade' you to a multifunctional product.

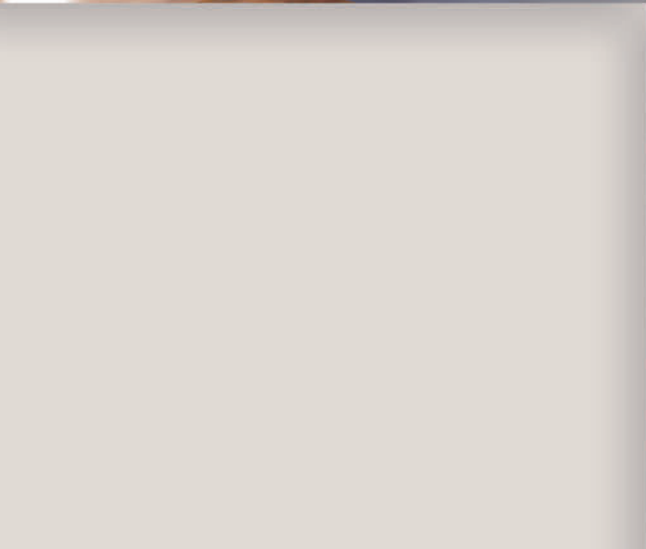
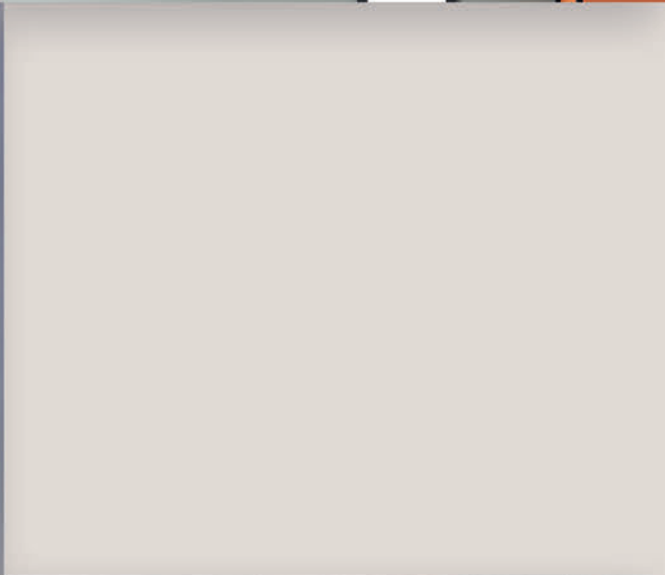
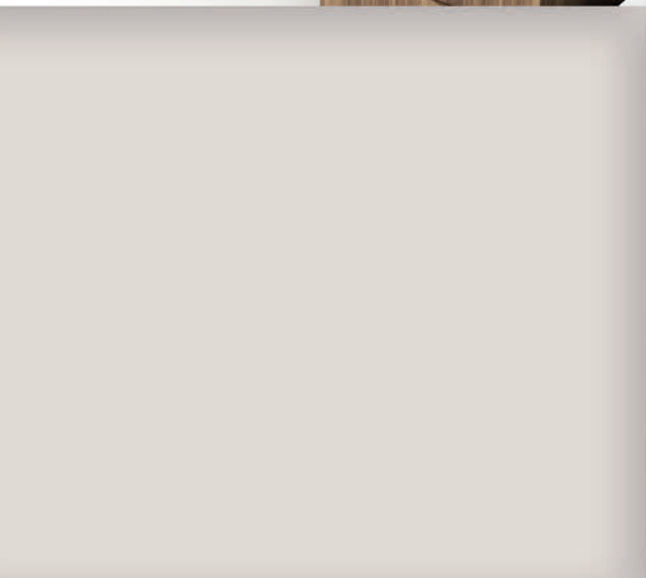
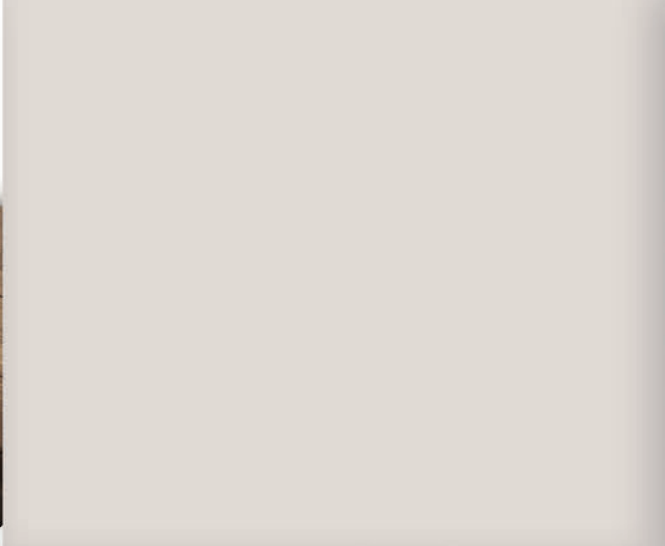
Countless colour options available.*

Can be manufactured in Stainless Steel which gives you the option of a mirror polished finish or a matt brushed finish.*

Options available at an extra cost. Please contact us for a full quotation.

INDEX

PRODUCT	MATERIAL	PRODUCT PAGE	TECHNICAL PAGE	PRODUCT	MATERIAL	PRODUCT PAGE	TECHNICAL PAGE
ELECTRIC ONLY RADIATORS				RUMA	Stainless Steel	131	224
FORTIS	Stainless Steel	77	197	SNOWFLAKE	Stainless Steel	116	216
GRATUS	Stainless Steel	77	197	SOFTY	Stainless Steel	109	212
DESIGNER RADIATORS				SWING	Stainless Steel	100	207
ADAGIO	Stainless Steel	82	198	TALENT	Stainless Steel	101	208
FORTE	Stainless Steel	86	200	TODOR	Stainless Steel	128	222
FUTURA	Stainless Steel	87	200	VIVI	Stainless Steel	104	210
KEOPS	Stainless Steel	93	203	WOODSTOCK	Stainless Steel	123	219
LINK	Stainless Steel	95	204	ZIGZAG	Stainless Steel	122	219
LINK FLOOR	Stainless Steel	94	204				
MISTRAL	Stainless Steel	90	202				
MISTRAL F	Stainless Steel	91	202				
ORIS	Stainless Steel	97	205				
PIANO	Stainless Steel	92	203				
SARP	Stainless Steel	89	201				
SQUA	Stainless Steel	96	205				
STRIPE	Stainless Steel	88	201				
TRIA	Stainless Steel	84	199				
UNIQUE	Stainless Steel	83	198				
VERSAILLES	Stainless Steel	85	199				
BATHROOM & KITCHEN RADIATORS							
ADORE	Stainless Steel	115	215				
ALIAS	Stainless Steel	114	215				
AREN	Stainless Steel	99	206				
ARLEN	Stainless Steel	113	214				
BARO	Stainless Steel	102	209				
BECK	Stainless Steel	127	221				
CASTOR	Stainless Steel	129	222				
CLASH	Stainless Steel	107	211				
CRUX	Stainless Steel	121	218				
DOMINO	Stainless Steel	106	211				
ECLIPSE	Stainless Steel	112	214				
ELDORADO	Stainless Steel	125	220				
EXODUS	Stainless Steel	130	223				
FLAP	Stainless Steel	126	221				
HALO	Stainless Steel	108	212				
HERRING	Stainless Steel	124	220				
IBIZA	Stainless Steel	117	216				
IVOR	Stainless Steel	105	210				
JACK	Stainless Steel	111	213				
JAZZ	Stainless Steel	118	217				
KLIPS	Stainless Steel	131	223				
KNIGHT	Stainless Steel	110	213				
LEPUS	Stainless Steel	100	208				
MIYA	Stainless Steel	119	217				
PAN	Stainless Steel	103	209				
PAROS	Stainless Steel	98	206				
REDOX	Stainless Steel	100	207				
RONI	Stainless Steel	120	218				





Stainless Steel

Designer Radiators

Bathroom & Kitchen Radiators

Pages

82 - 131

82 - ADAGIO
83 - UNIQUE
84 - TRIA
85 - VERSAILLES
86 - FORTE
87 - FUTURA
88 - STRIPE
89 - SARP
90 - MISTRAL
91 - MISTRAL F
92 - PIANO
93 - KEOPS
94 - LINK FLOOR
95 - LINK
96 - SQUA
97 - ORIS
98 - PAROS
99 - AREN

100 - REDOX
100 - LEPUS
100 - SWING
101 - TALENT
102 - BARO
103 - PAN
104 - VIVI
105 - IVOR
106 - DOMINO
107 - CLASH
108 - HALO
109 - SOFTY
110 - KNIGHT
111 - JACK
112 - ECLIPSE
113 - ARLEN
114 - ALIAS
115 - ADORE

116 - SNOWFLAKE
117 - IBIZA
118 - JAZZ
119 - MIYA
120 - RONI
121 - CRUX
122 - ZIGZAG
123 - WOODSTOCK
124 - HERRING
125 - ELDORADO
126 - FLAP
127 - BECK
128 - TODOR
129 - CASTOR
130 - EXODUS
131 - KLIPS
131 - RUMA

ADAGIO

A piece of art...

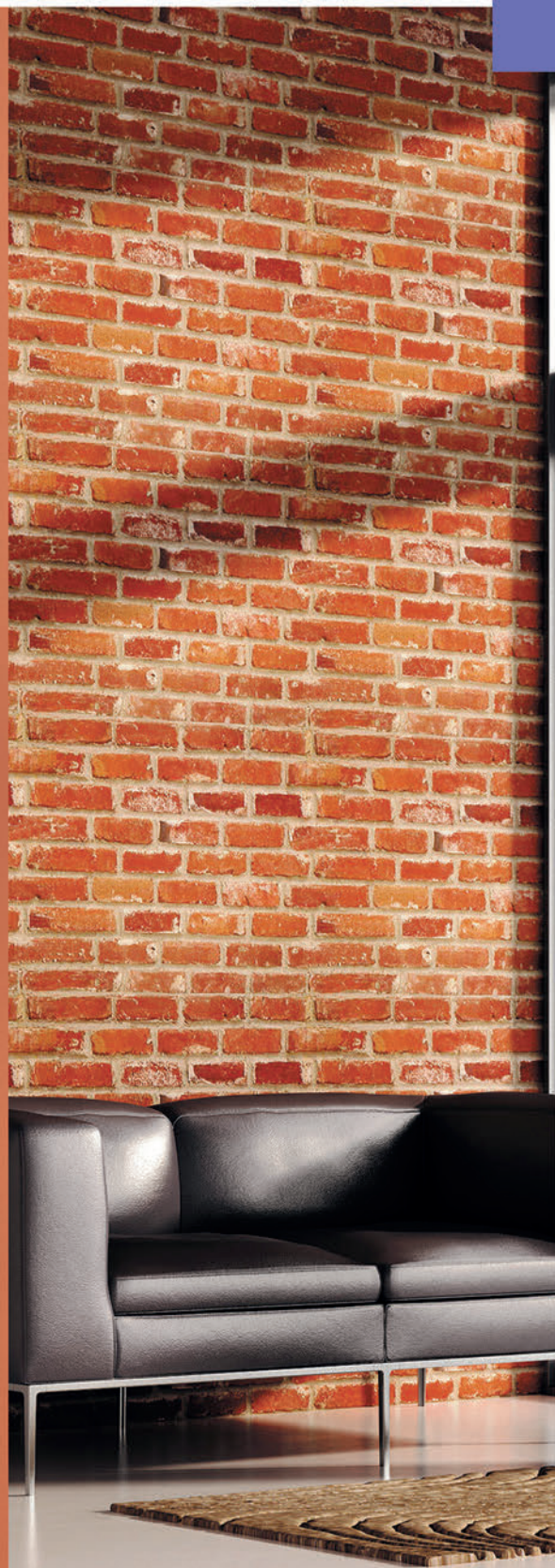
This product will be the masterpiece of any interior. It is made of polished and brushed stainless steel with gold plated brass finials. The Adagio radiator is a limited edition and it is certificated.



UNIQUE



83



A true 21st century Unique design statement. Forging ahead with design and innovation. Once again merging technology and aesthetics to create functional beauty.

198

TRIA





VERSAILLES

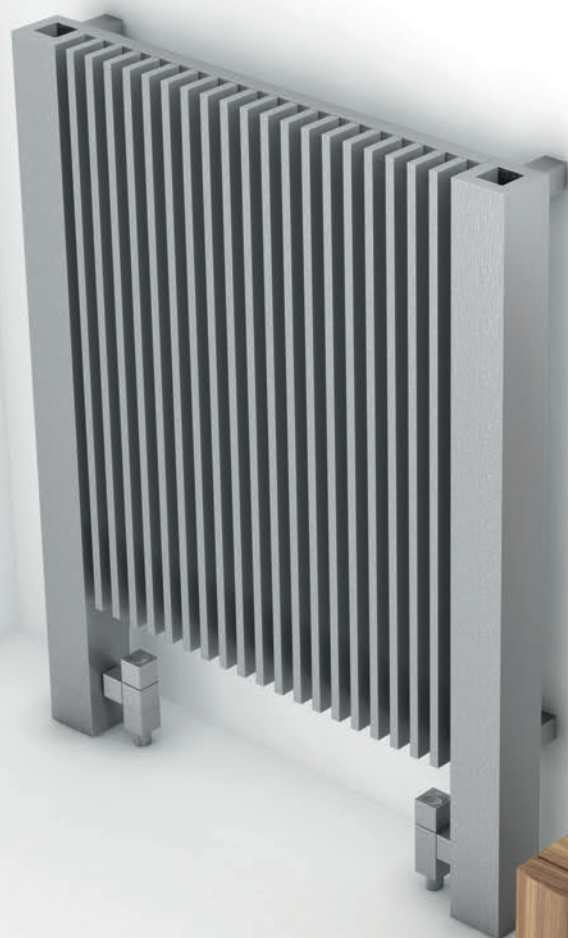
199

A modern interior scene featuring a grey radiator, a wooden table, and red chairs. The radiator is composed of several vertical rectangular sections. The table has a light wood grain top and dark legs. Two red upholstered chairs are visible. The background is a dark grey wall with two framed abstract artworks. The floor is white and reflective.

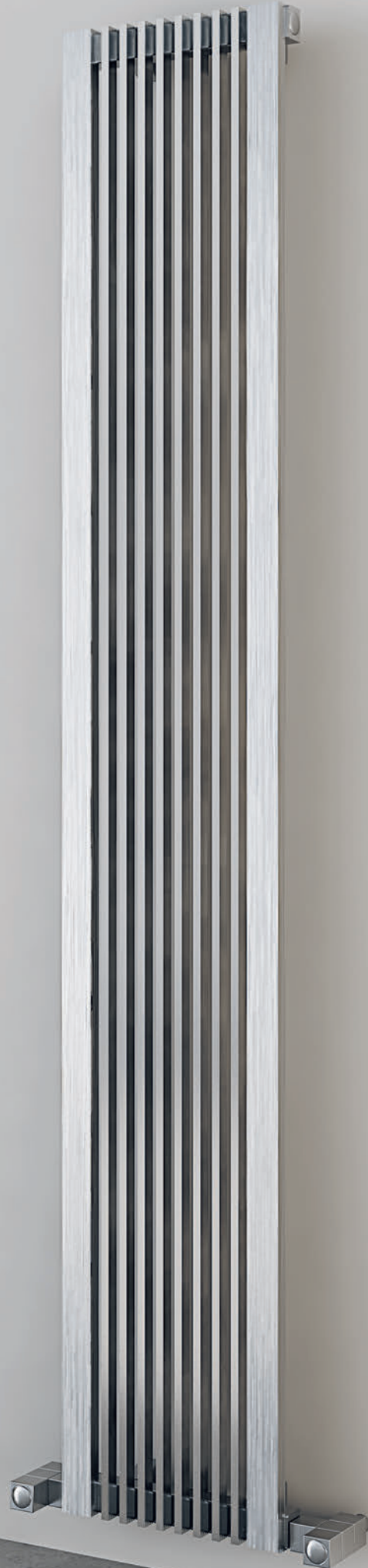
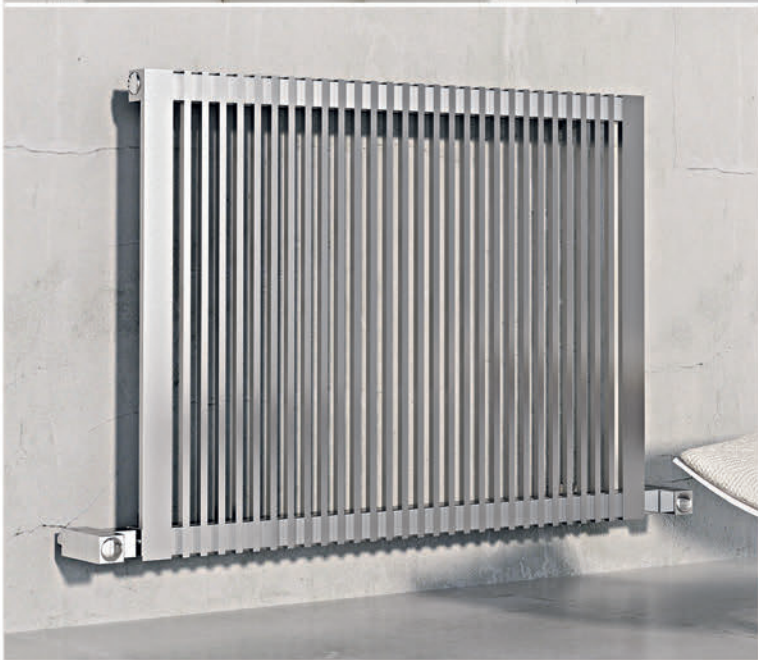
FORTE

Powerful square lines bring the feeling of strength and warmth. How did you live without Forte?

FUTURA



STRIPE



SARP

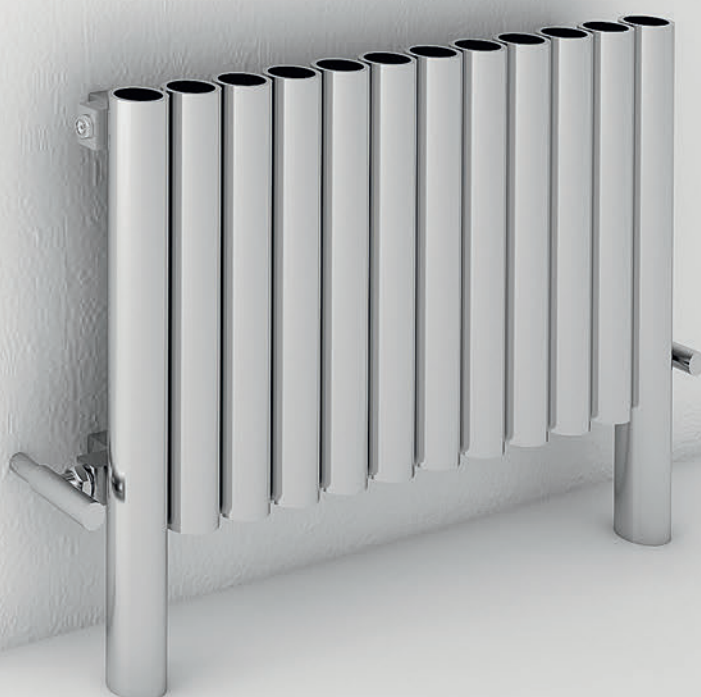


MISTRAL



MISTRAL F

Born of aesthetical ethos an
indispensable radiator for
horizontal applications.

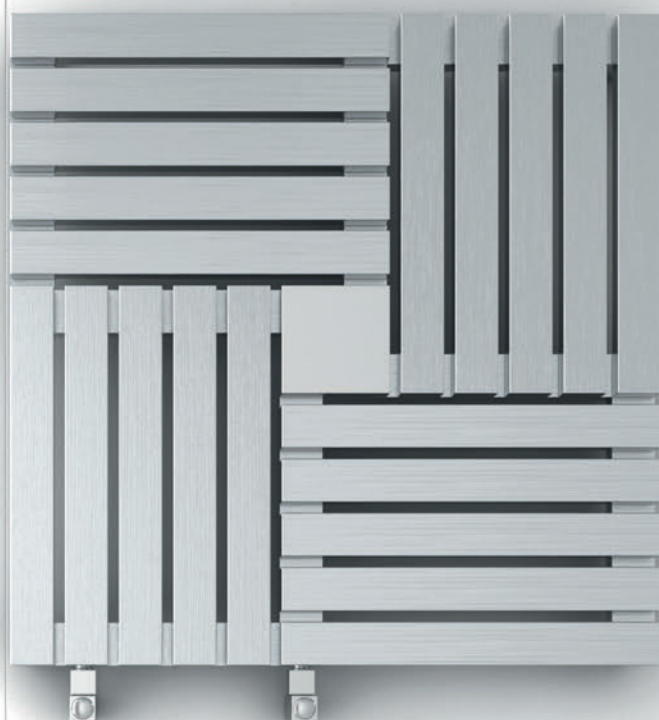


PIANO

Just a piece for music and art
lovers, looks as warm as the
notes elicited from a piano.



KEOPS



A geometrical sharpness in the spirit of the magnificent Keops of Egypt. Hangs like a monument on your wall.



NEW

204

LINK FLOOR

LINK

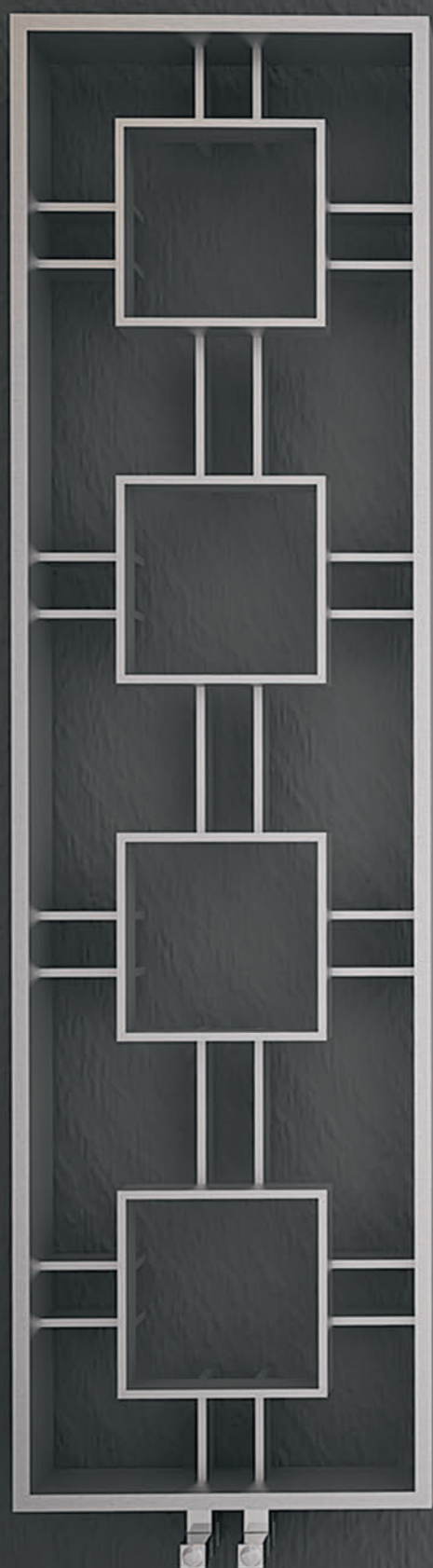
A stainless steel masterpiece that is surprising and admired by all. Its exceptional appearance makes the Link a fine example of design and technology in perfect harmony.



NEW

204

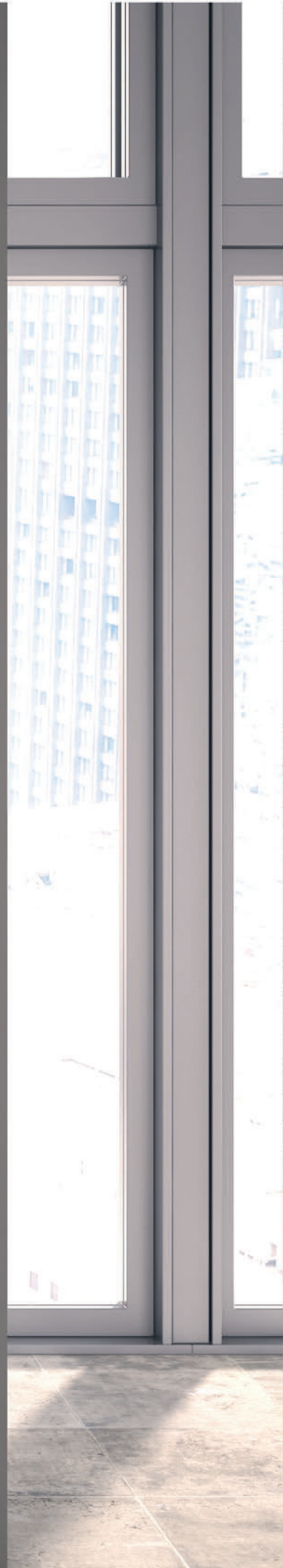
SQUA



ORIS



PAROS



206

AREN



REDOX



207

LEPUS



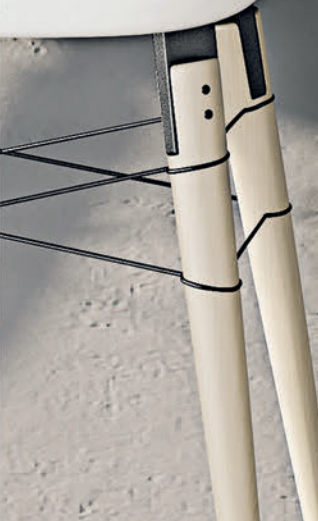
208

SWING



207

TALENT



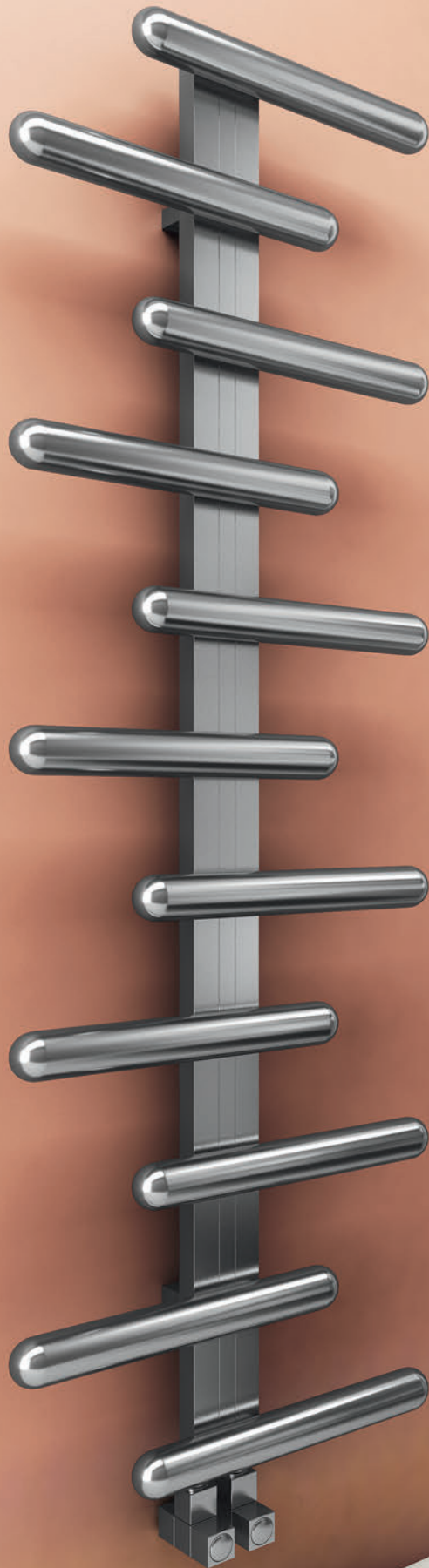


209 BARO



PAN 209

VIVI



210

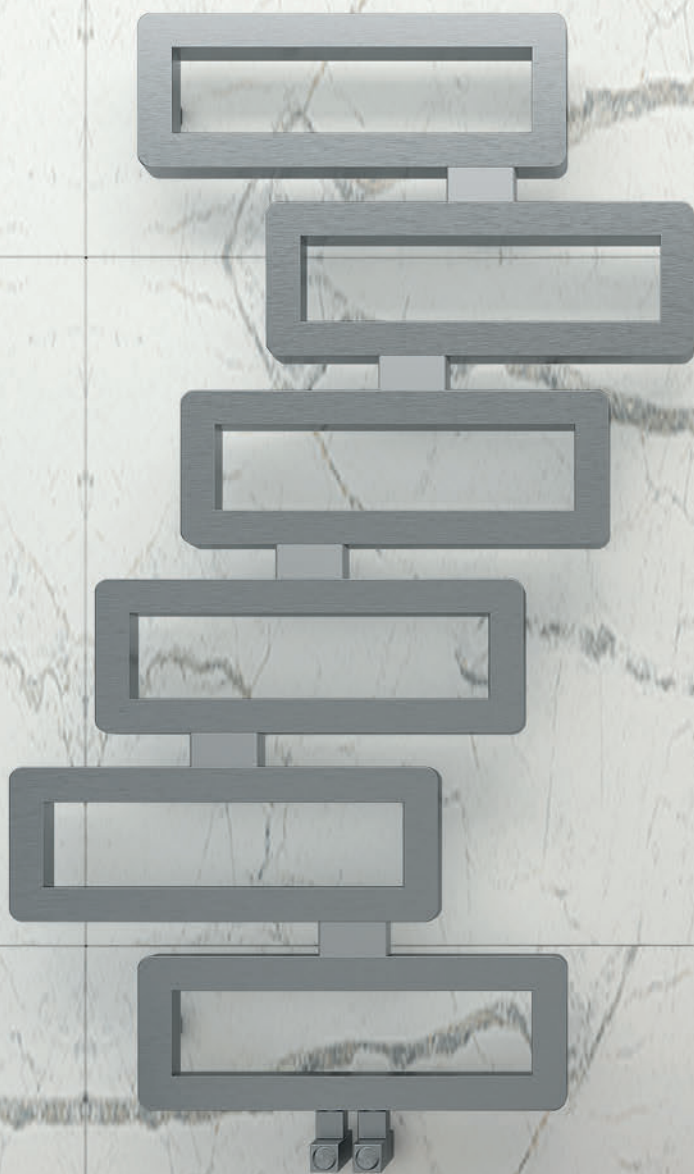




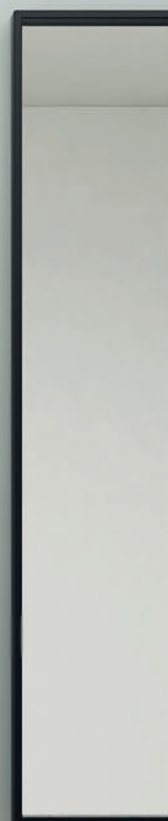
IVOR



DOMINO



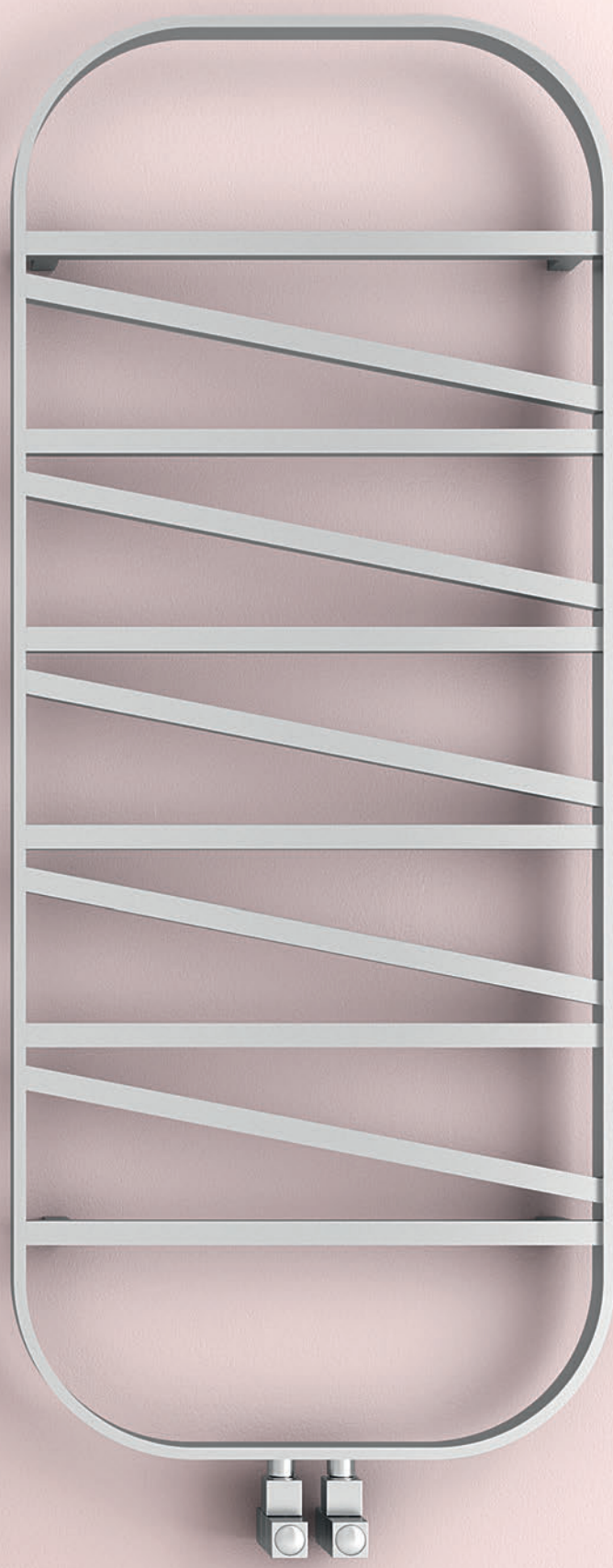
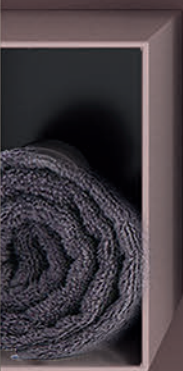
CLASH





212 HALO

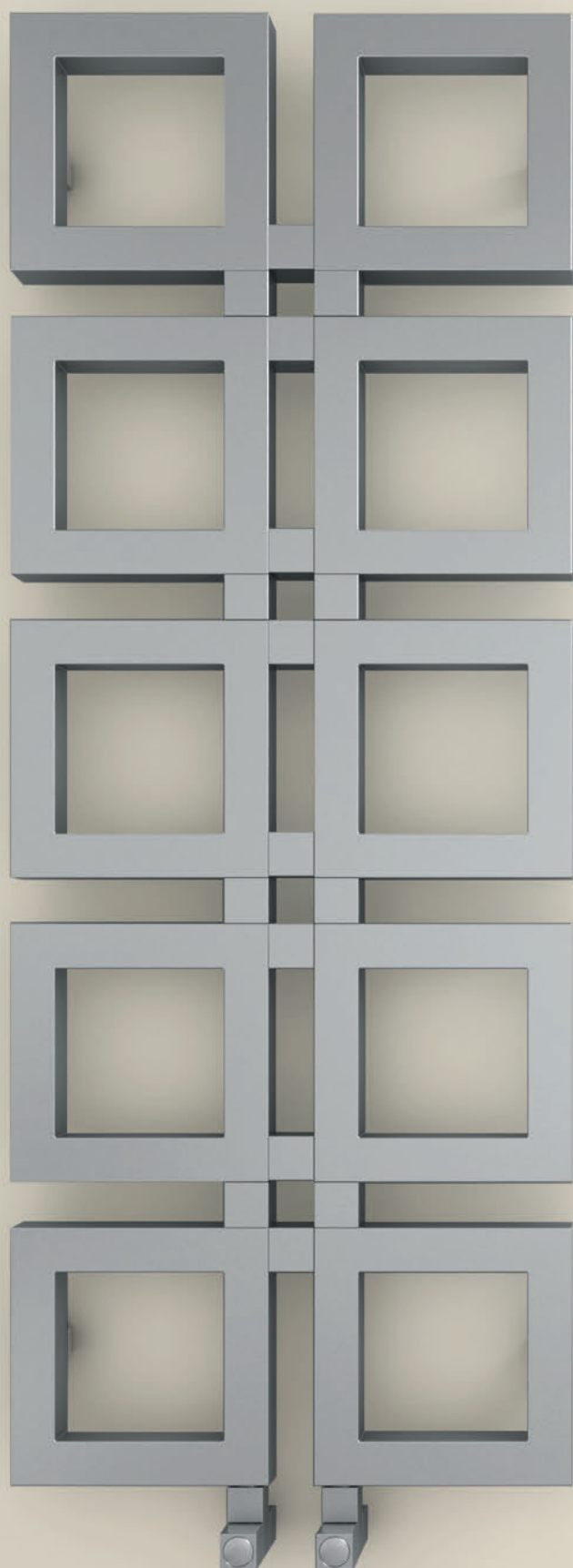




NEW

SOFTY 212

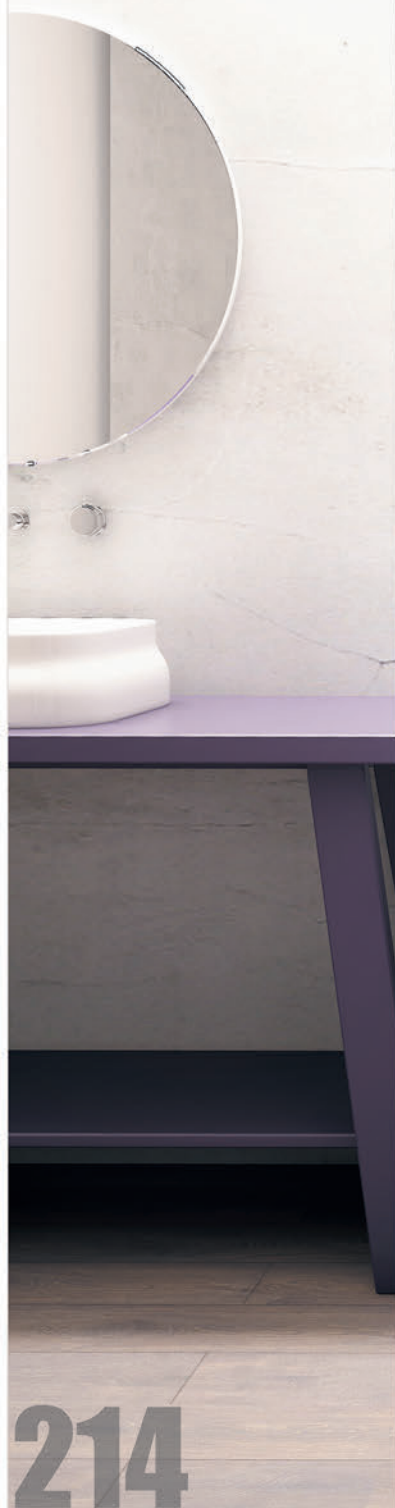
KNIGHT



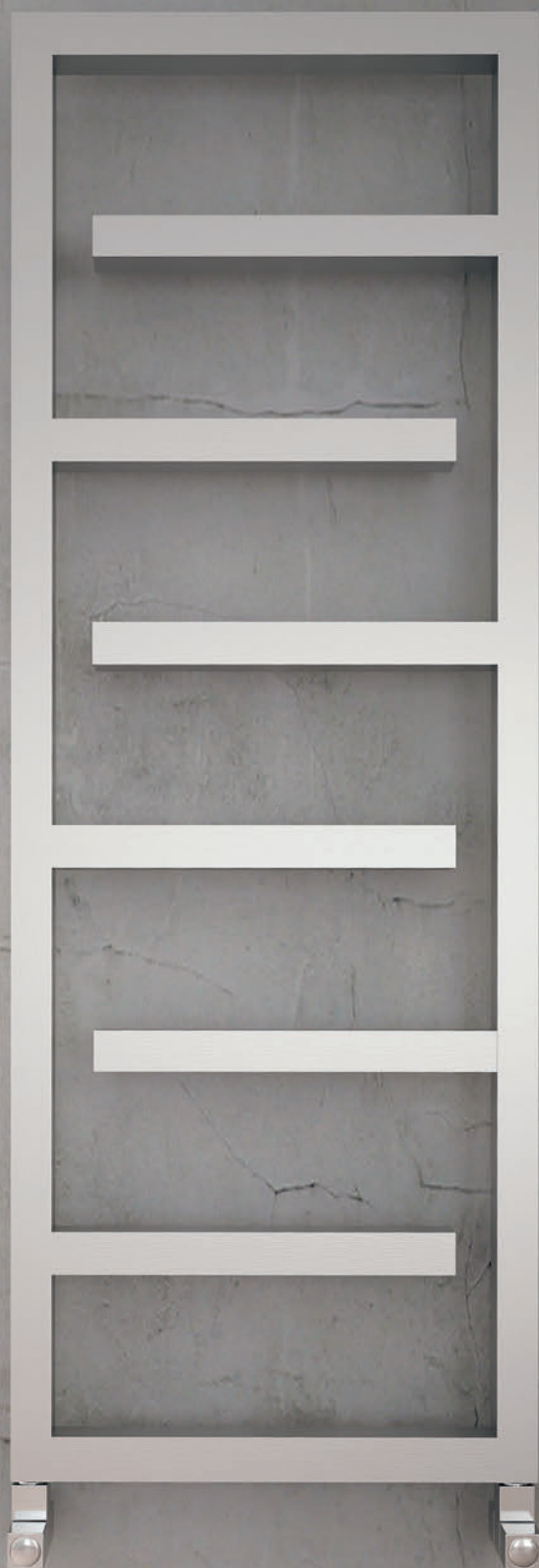


JACK 213

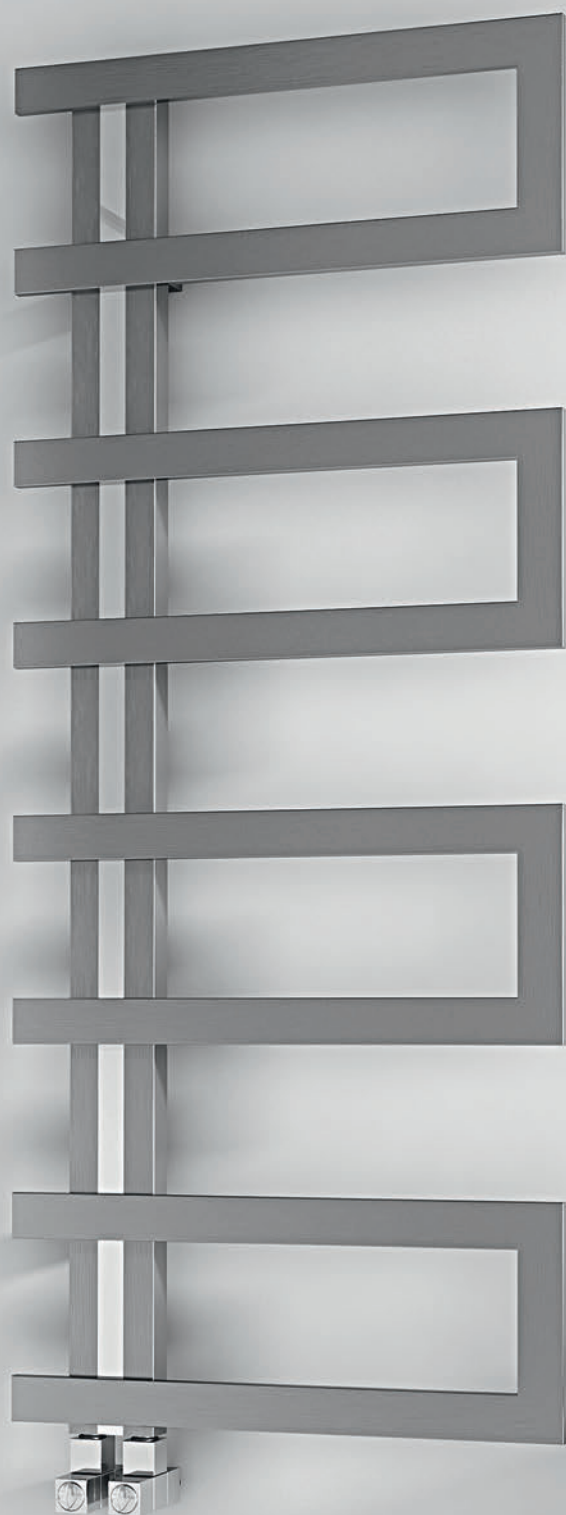
ECLIPSE



214



ARLEN



ALIAS



215





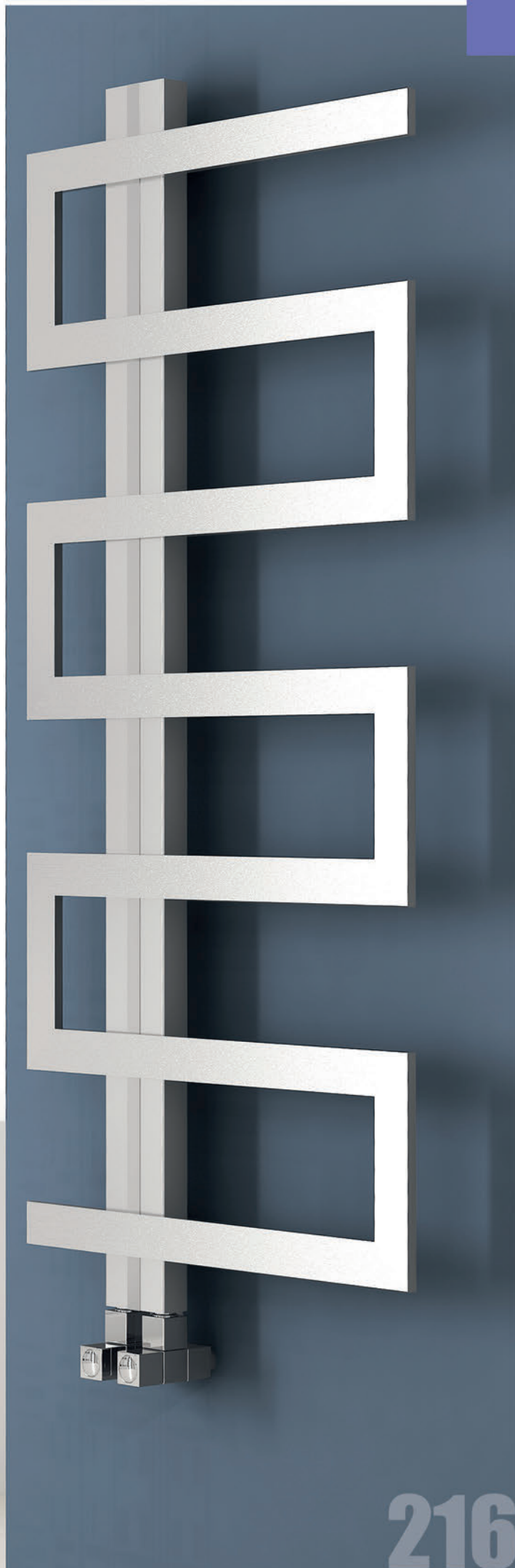
ADORE **215**

SNOWFLAKE



IBIZA

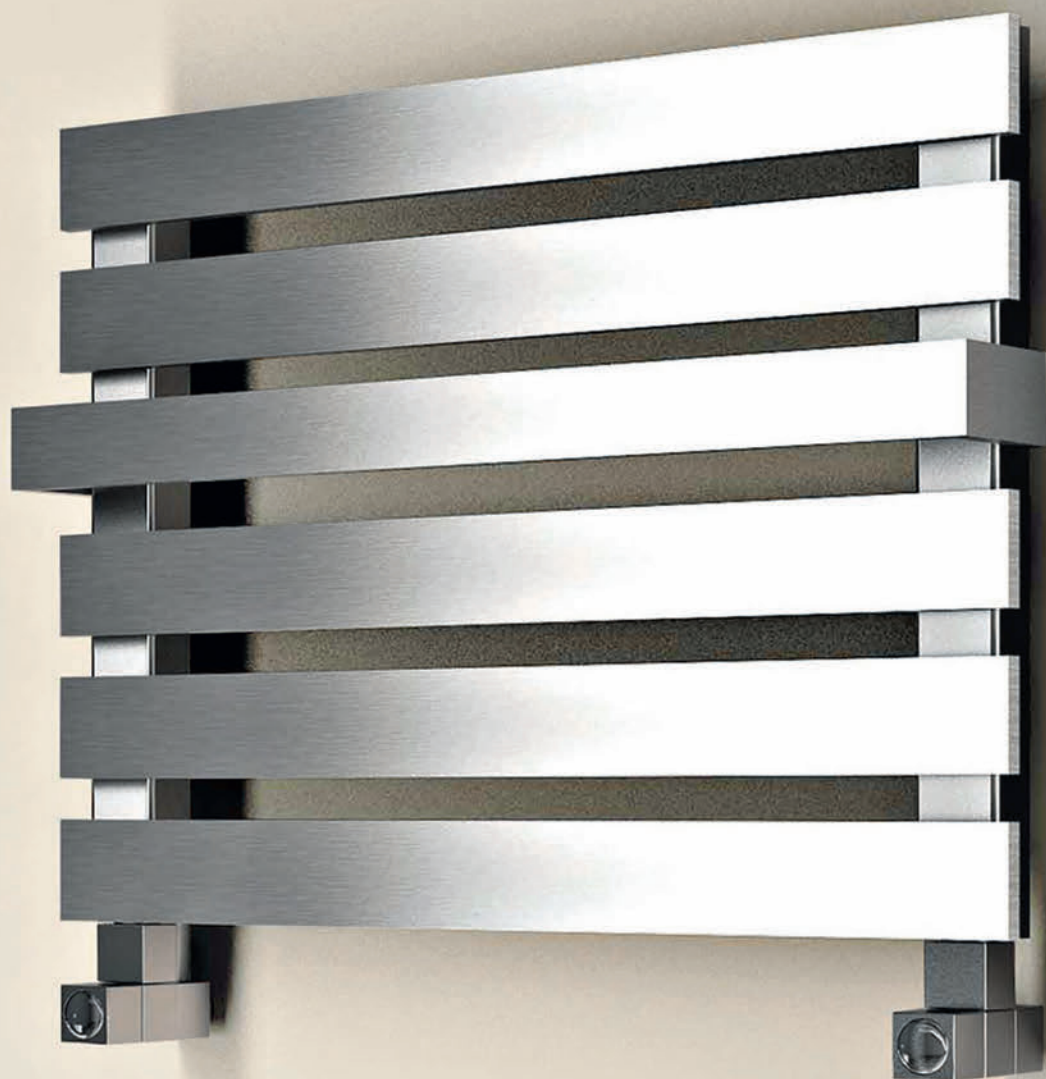
Ibiza is a stainless steel towel warmer that holds a place of its own in terms of intricate design. Stunning to look at and so practical to use, simply slide your towels on and off as you need them, always warm and fluffy.





JAZZ





MIYA

217

RONI



CRUX

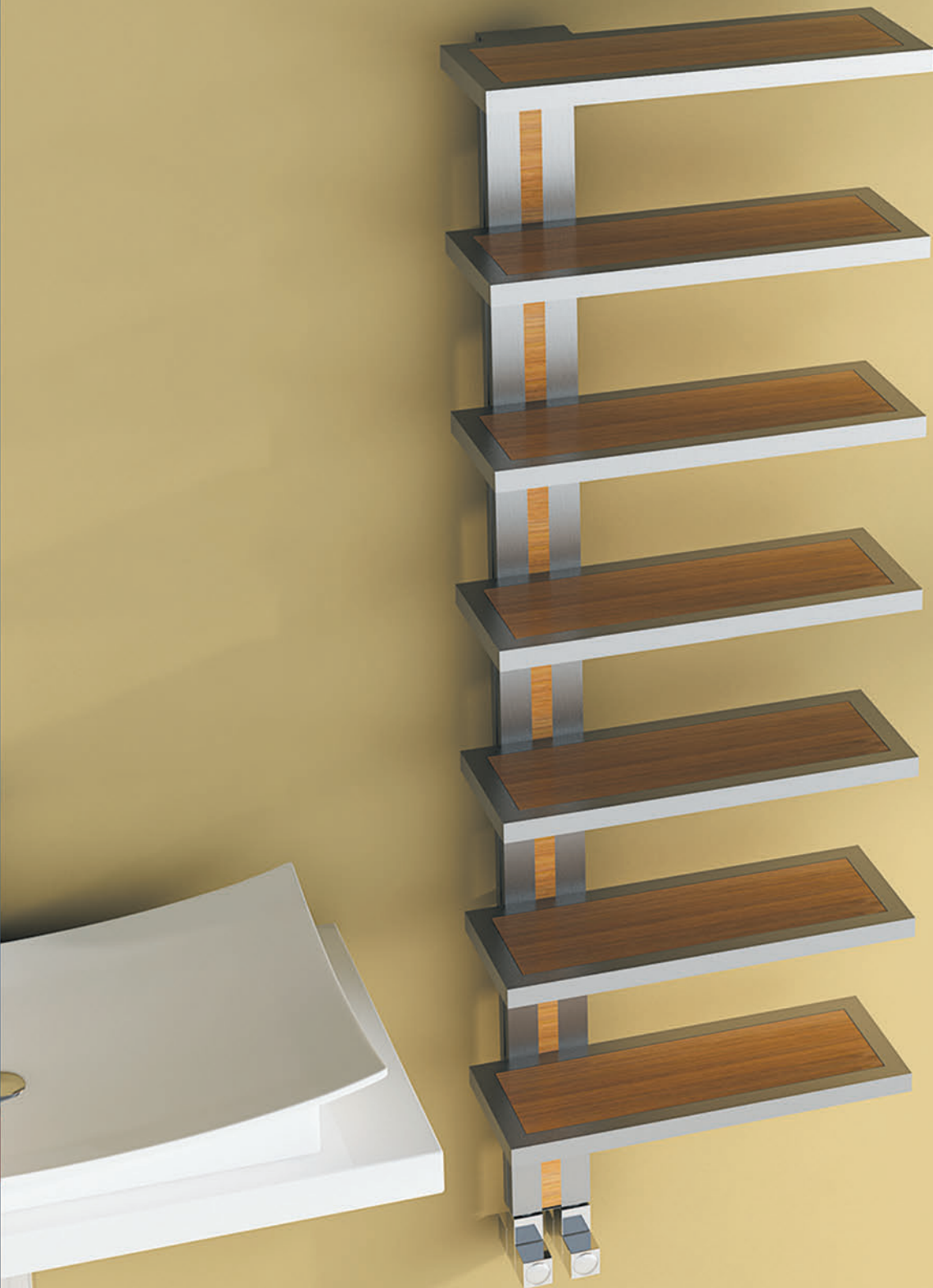


ZIGZAG

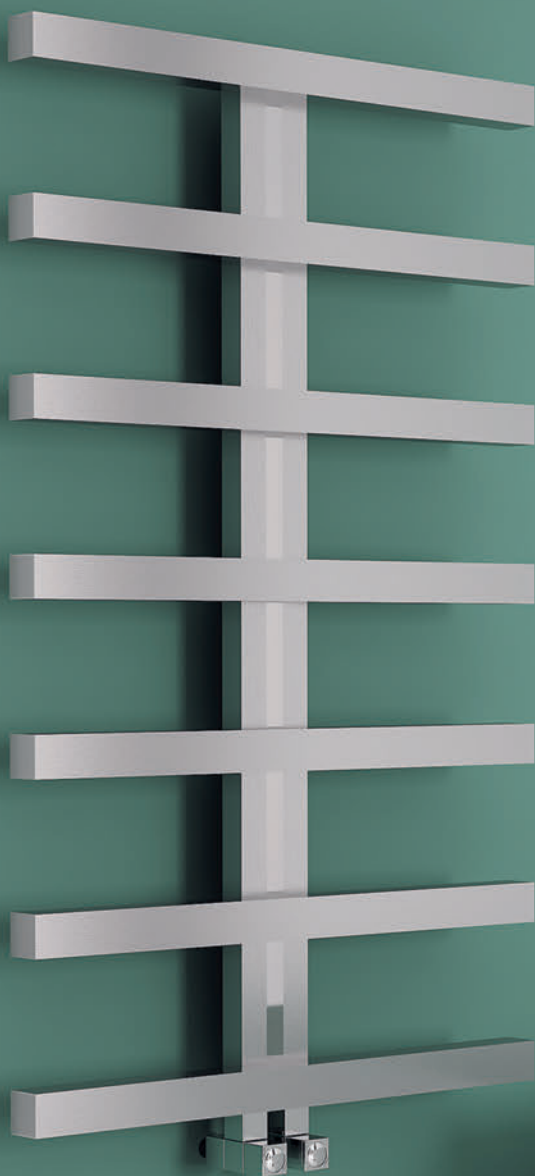


219

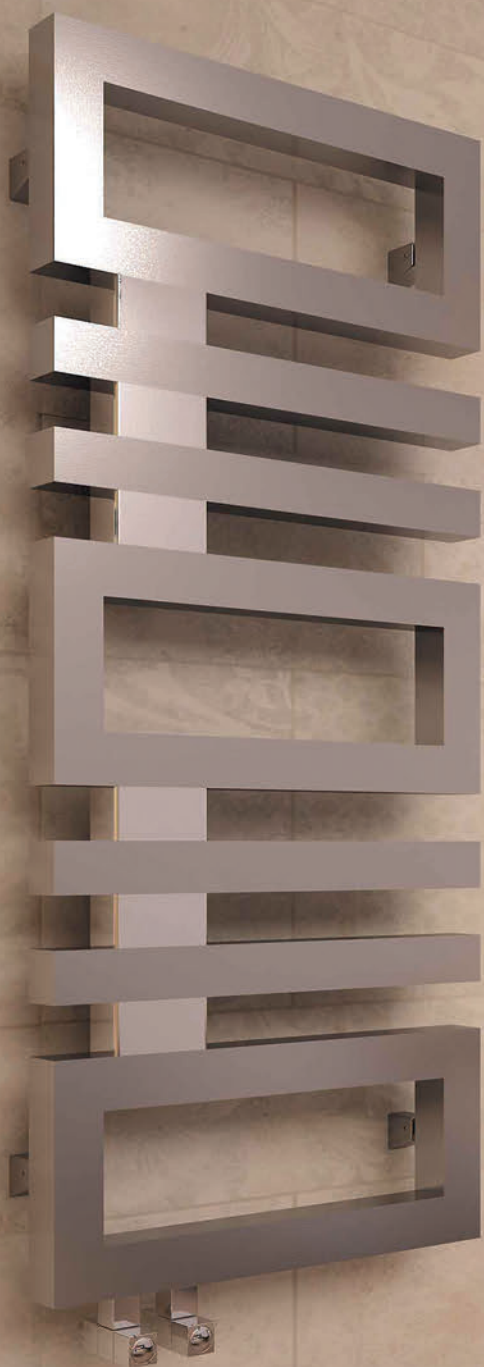
WOODSTOCK



HERRING

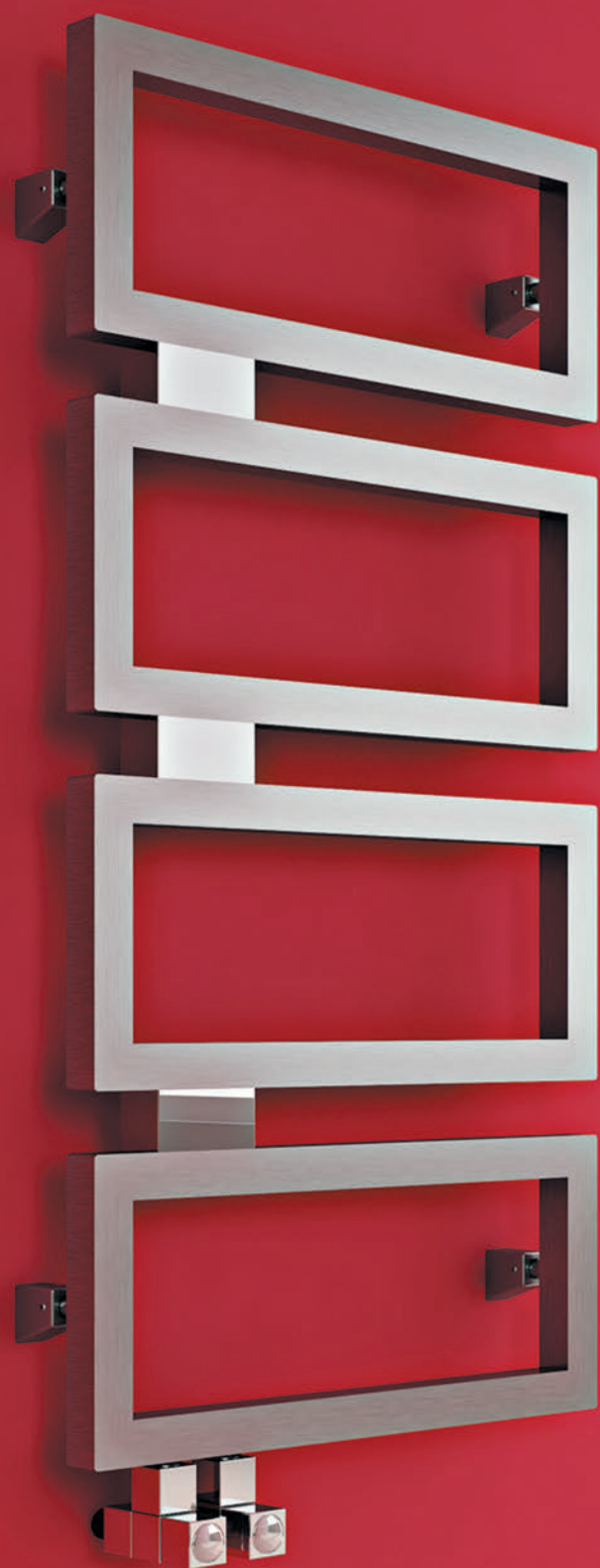


ELDORADO



FLAP

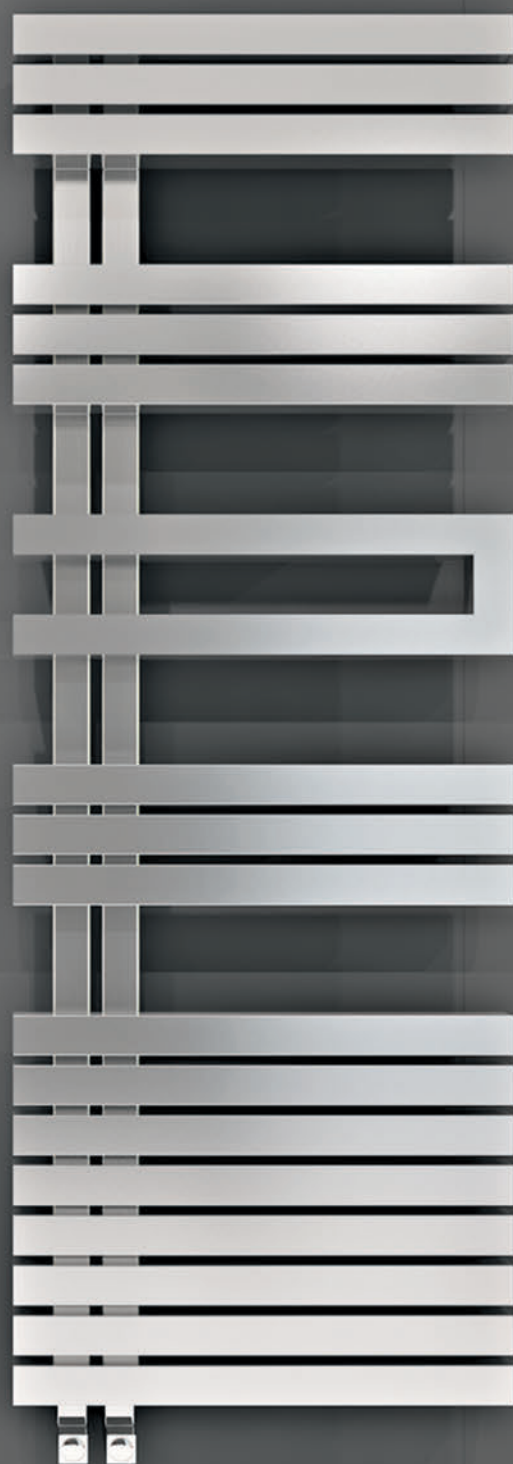




BECK



TODOR



CASTOR



EXODUS



RUMA



KLIPS



224

223

FORTIS

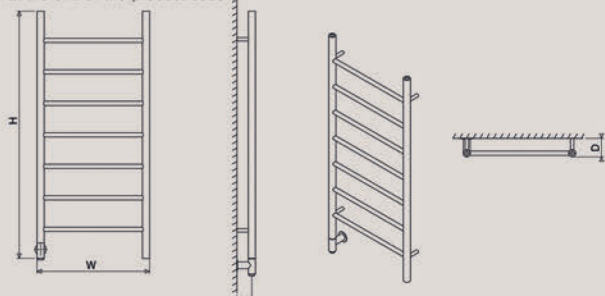
Material	Stock Finishes	Guarantee	Installation
Stainless Steel	PLS SEE COLOUR KEY CHART, PAGE 161	2 Years	Vertical

PRODUCT CODE	Height (mm) H	Width (mm) W	Sections n	Wall Distance D (mm)	Nett Weight (kg)	Fuel Type	Heat Outputs Watts
FRS 0500070005	700	500	5	75-90	3.0	E	80
FRS 0500090006	900	500	6	75-90	3.5	E	100
FRS 0500110007	1100	500	7	75-90	4.0	E	120

Please add finishing code
at the end of the product code

Code example : FRS 0500110007 STP

Fuel type i.e C: Central Heating
E: Electrical Heating
D: Dual Heating (C+E)



A full range of made to order sizes available.

Please ask for details.

n = number of sections

Max. working temperature

95 °C

GRATUS

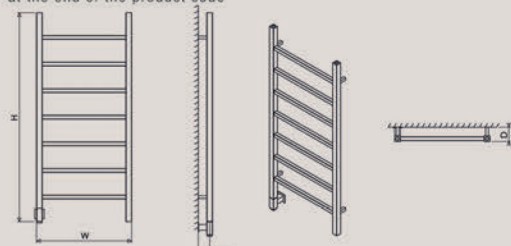
Material	Stock Finishes	Guarantee	Installation
Stainless Steel	PLS SEE COLOUR KEY CHART, PAGE 161	2 Years	Vertical

PRODUCT CODE	Height (mm) H	Width (mm) W	Sections n	Wall Distance D (mm)	Nett Weight (kg)	Fuel Type	Heat Outputs Watts
GRS 0500070005	700	500	5	75-90	3.6	E	80
GRS 0500090006	900	500	6	75-90	4.2	E	100
GRS 0500110007	1100	500	7	75-90	4.8	E	120

Please add finishing code
at the end of the product code

Code example : GRS 0500110007 STP

Fuel type i.e C: Central Heating
E: Electrical Heating
D: Dual Heating (C+E)



A full range of made to order sizes available.

Please ask for details.

Max. working temperature

95 °C

ADAGIO

Material
Stainless Steel

Stock Finishes
PLS SEE COLOUR
KEY CHART, PAGE 161

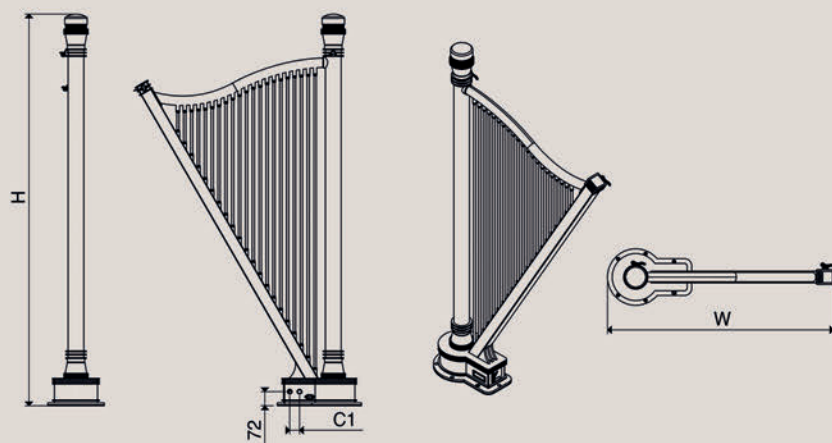
Guarantee
20 Years

Installation

PRODUCT CODE	Height (mm) H	Width (mm) W	Sections n	Pipe Centers (mm) C1	Wall to pipe Centers A (mm)	Wall Distance D (mm)	Nett Weight (kg)	Water Content (lt)	Fuel Type	Heat Outputs	
										Watts	BTU
ADA1150200021	2000	1150	21	50	-	-	37.0	8.1	D	1097	3744

Please add finishing code at the end of the product code **Code example : ADA 1150 2000 21 STP**

Fuel type i.e C: Central Heating
E: Electrical Heating
D: Dual Heating (C+E)



C1

Max. working pressure 10 bar
Max. working temperature 95 °C
Connections 1/2"
Pipe centers C1 50 mm

UNIQUE

Material
Stainless Steel

Stock Finishes
PLS SEE COLOUR
KEY CHART, PAGE 161

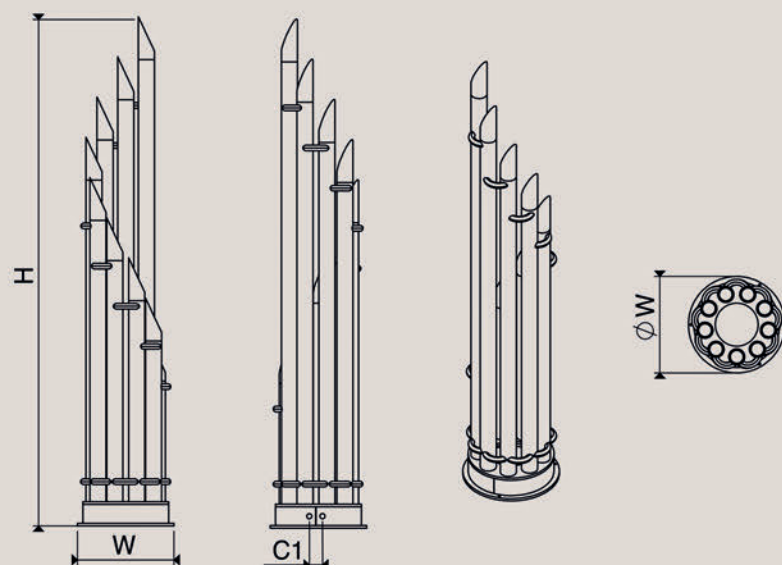
Guarantee
20 Years

Installation

PRODUCT CODE	Height (mm) H	Width (mm) W	Sections n	Pipe Centers (mm) C1	Wall to pipe Centers A (mm)	Wall Distance D (mm)	Nett Weight (kg)	Water Content (lt)	Fuel Type	Heat Outputs	
										Watts	BTU
UNQ 0360190009	1900	360	9	50	-	-	45.6	9.7	D	1058	3611

Please add finishing code at the end of the product code **Code example : UNQ 0360190009 STP**

Fuel type i.e C: Central Heating
E: Electrical Heating
D: Dual Heating (C+E)



A full range of made to order sizes available.

Please ask for details.

n = number of sections

Max. working pressure 10 bar

Max. working temperature 95 °C

Connections 1/2"

Pipe centers C1 50 mm

TRIA

Material
Stainless Steel

Stock Finishes
PLS SEE COLOUR
KEY CHART, PAGE 161

Guarantee
20 Years

Installation
Vertical

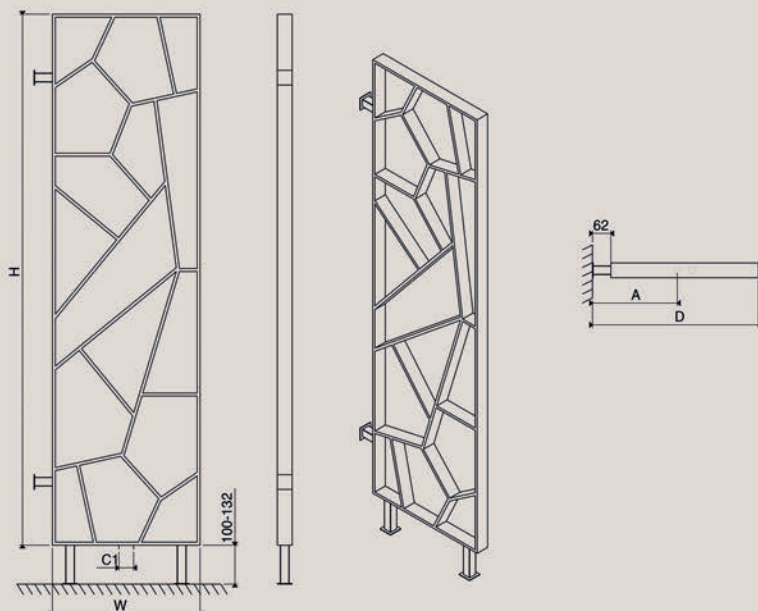
PRODUCT CODE	Height (mm) H	Width (mm) W	Sections n	Pipe Centers (mm) C1	Wall to pipe Centers A (mm)	Wall Distance D (mm)	Nett Weight (kg)	Water Content (lt)	Fuel Type	Heat Outputs	
										Watts	BTU
TRA 0500180021	1800	500	21	50	287	562	15,8	6,5	C	1074	3664

Please add finishing code
at the end of the product code

Code example : TRA 0500180021 STP

Fuel type i.e

C: Central Heating
E: Electrical Heating
D: Dual Heating (C+E)



n = number of sections

Max. working pressure

10 bar

Max. working temperature

95 °C

Connections

1/2"

Pipe centers

C1

50 mm

VERSAILLES

Material
Stainless Steel

Stock Finishes
PLS SEE COLOUR
KEY CHART, PAGE 161

Guarantee
20 Years

Installation
Vertical

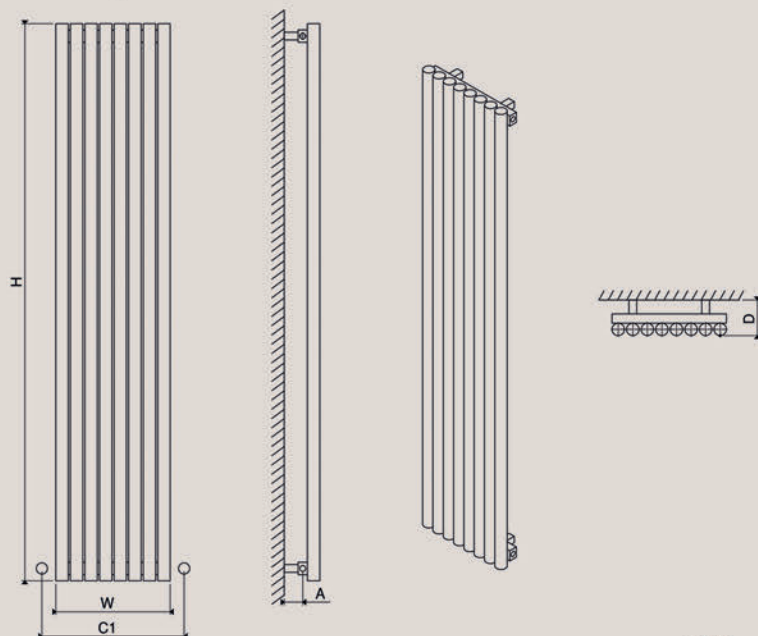
PRODUCT CODE	Height (mm) H	Width (mm) W	Sections n	Pipe Centers (mm) C1	Wall to pipe Centers A (mm)	Wall Distance D (mm)	Nett Weight (kg)	Water Content (lt)	Fuel Type	Heat Outputs	
										Watts	BTU
VER 0370100008	1000	370	8	460	60-75	115-130	14.8	13.5	D	469	1599
VER 0370150008	1500	370	8	460	60-75	115-130	22.0	19.5	D	703	2398
VER 0370180008	1800	370	8	460	60-75	115-130	26.2	23.1	D	843	2878
VER 0370200008	2000	370	8	460	60-75	115-130	28.8	26.2	D	937	3198

Please add finishing code
at the end of the product code

Code example : VER 0370100008 MRP

Fuel type i.e

C: Central Heating
E: Electrical Heating
D: Dual Heating (C+E)



A full range of made to order sizes available.

Please ask for details.

n = number of sections

Max. working pressure

10 bar

Max. working temperature

95 °C

Connections

1/2"

Pipe centers

C1

W+90mm

FORTE

Material
Stainless Steel

Stock Finishes
PLS SEE COLOUR
KEY CHART, PAGE 161

Guarantee
20 Years

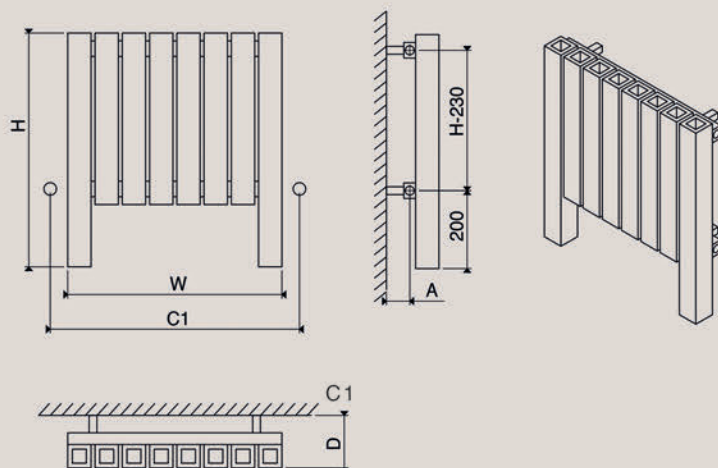
Installation
Horizontal

PRODUCT CODE	Height (mm) H	Width (mm) W	Sections n	Pipe Centers (mm) C1	Wall to pipe Centers A (mm)	Wall Distance D (mm)	Nett Weight (kg)	Water Content (lt)	Fuel Type	Heat Outputs	
										Watts	BTU
FRT 0550060008	600	550	8	640	60-75	135-150	17,8	9,9	D	683	2332
FRT 0690060010	600	690	10	780	60-75	135-150	22,3	12,3	D	854	2915
FRT 0830060012	600	830	12	920	60-75	135-150	26,7	14,8	D	1025	3497
FRT 0970060014	600	970	14	1060	60-75	135-150	31,2	17,3	D	1196	4080
FRT 1110060016	600	1110	16	1200	60-75	135-150	35,6	19,7	D	1367	4663
FRT 1390060020	600	1390	20	1480	60-75	135-150	44,5	24,7	D	1708	5829

Please add finishing code
at the end of the product code

Code example : FRT 0550060008 MRP

Fuel type i.e C: Central Heating
E: Electrical Heating
D: Dual Heating (C+E)



A full range of made to order sizes available.

Please ask for details.

n = number of sections

Max. working pressure 10 bar

Max. working temperature 95 °C

Connections 1/2"

Pipe centers C1 W+90mm

FUTURA

Material
Stainless Steel

Stock Finishes
PLS SEE COLOUR
KEY CHART, PAGE 161

Guarantee
20 Years

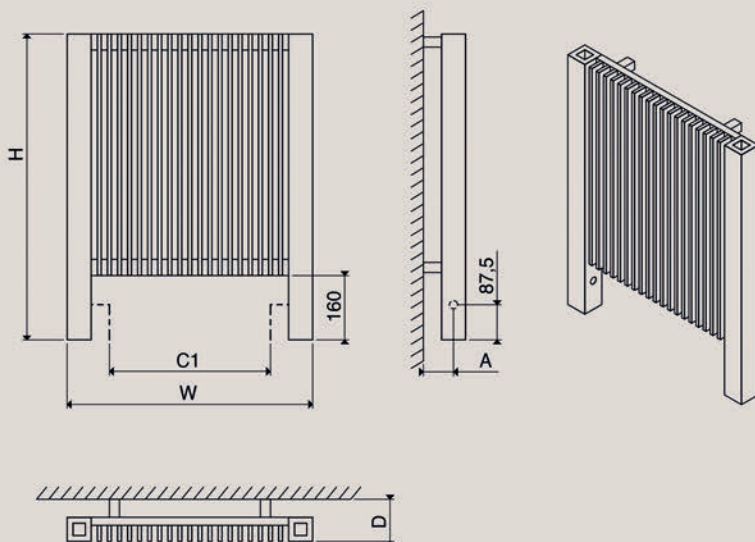
Installation
Horizontal

PRODUCT CODE	Height (mm) H	Width (mm) W	Sections n	Pipe Centers (mm) C1	Wall to pipe Centers A (mm)	Wall Distance D (mm)	Nett Weight (kg)	Water Content (lt)	Fuel Type	Heat Outputs	
										Watts	BTU
FUT 0610076021	760	610	21	400	75-90	105-120	24,1	7,4	C	416	1419
FUT 0710076025	760	710	25	500	75-90	105-120	27,1	8,3	C	504	1719
FUT 0810076029	760	810	29	600	75-90	105-120	30,1	9,2	C	584	1992
FUT 0910076033	760	910	33	700	75-90	105-120	33,0	10,1	C	656	2238
FUT 1110076041	760	1110	41	900	75-90	105-120	38,7	11,5	C	814	2778

Please add finishing code
at the end of the product code

Code example : FUT 0610076021 STP

Fuel type i.e C: Central Heating
E: Electrical Heating
D: Dual Heating (C+E)



A full range of made to order sizes available.

Please ask for details.

n = number of sections

Max. working pressure 10 bar

Max. working temperature 95 °C

Connections 1/2"

Pipe centers C1 W-210mm

STRIPE

Material
Stainless Steel

Stock Finishes
PLS SEE COLOUR
KEY CHART, PAGE 161

Guarantee
20 Years

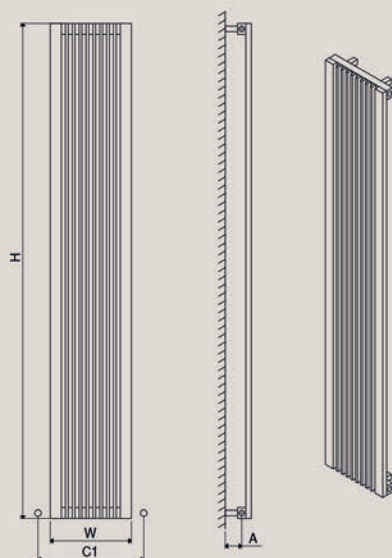
Installation
Vertical
Horizontal

PRODUCT CODE	Height (mm) H	Width (mm) W	Sections n	Pipe Centers (mm) C1	Wall to pipe Centers A (mm)	Wall Distance D (mm)	Nett Weight (kg)	Water Content (lt)	Fuel Type	Heat Outputs	
										Watts	BTU
SPE 0295180010	1800	295	10	385	60-75	85-100	21,1	5,3	D	586	1999
SPE 0395180014	1800	395	14	485	60-75	85-100	29,5	7,3	D	820	2798
SPE 0595060022	0600	595	22	685	60-75	85-100	16,5	4,7	D	730	2491
SPE 0795060030	0600	795	30	885	60-75	85-100	22,8	6,3	D	996	3397

Please add finishing code
at the end of the product code

Code example : SPE 0295180010 **STP**

Fuel type i.e
C: Central Heating
E: Electrical Heating
D: Dual Heating (C+E)



A full range of made to order sizes available.

Please ask for details.

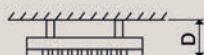
n = number of sections

Max. working pressure 10 bar

Max. working temperature 95 °C

Connections 1/2"

Pipe centers C1 W+90mm



SARP

Material
Stainless Steel

Stock Finishes
PLS SEE COLOUR
KEY CHART, PAGE 161

Guarantee
20 Years

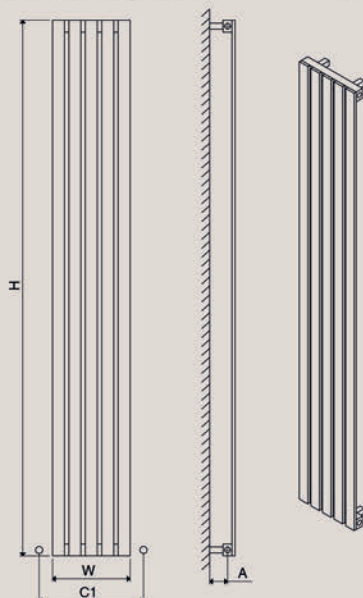
Installation
Vertical
Horizontal

PRODUCT CODE	Height (mm) H	Width (mm) W	Sections n	Pipe Centers (mm) C1	Wall to pipe Centers A (mm)	Wall Distance D (mm)	Nett Weight (kg)	Water Content (lt)	Fuel Type	Heat Outputs	
										Watts	BTU
SRP 0590060011	600	590	11	680	60-75	85-100	7.8	3.0	D	619	2112
SRP 0810060015	600	810	15	900	60-75	85-100	10.6	4,1	D	825	2816
SRP 0260180005	1800	260	5	350	60-75	85-100	8.9	3.0	D	635	2166
SRP 0370180007	1800	370	7	460	60-75	85-100	12.5	4.3	D	952	3250

Please add finishing code
at the end of the product code

Code example : SRP 0810060015 **MRP**

Fuel type i.e
C: Central Heating
E: Electrical Heating
D: Dual Heating (C+E)



A full range of made to order sizes available.

Please ask for details.

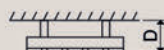
n = number of sections

Max. working pressure 10 bar

Max. working temperature 95 °C

Connections 1/2"

Pipe centers C1 W+90mm



MISTRAL

Material
Stainless Steel

Stock Finishes
PLS SEE COLOUR
KEY CHART, PAGE 161

Guarantee
20 Years

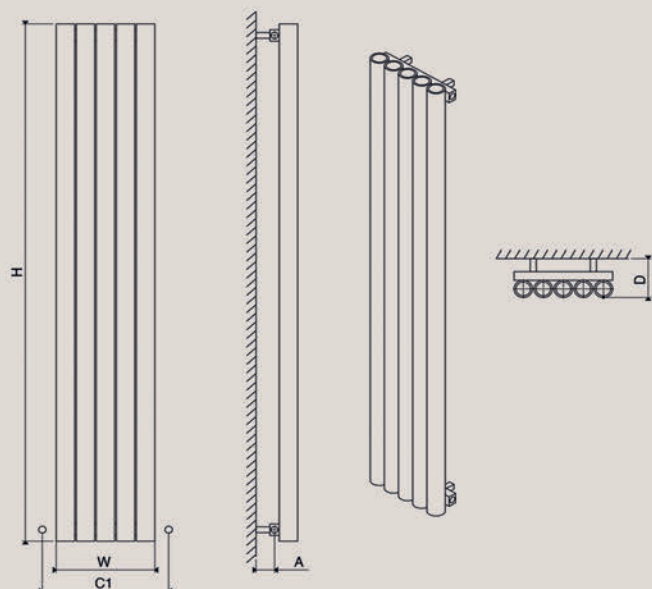
Installation
Vertical

PRODUCT CODE	Height (mm) H	Width (mm) W	Sections n	Pipe Centers (mm) C1	Wall to pipe Centers A (mm)	Wall Distance D (mm)	Nett Weight (kg)	Water Content (lt)	Fuel Type	Heat Outputs	
										Watts	BTU
MIS 0320180005	1800	320	5	410	60-75	135-150	33.1	7.7	C	873	2978
MIS 0385180006	1800	385	6	475	60-75	135-150	39.7	9.3	C	1048	3577
MIS 0450180007	1800	450	7	540	60-75	135-150	46.3	10.9	C	1220	4164

Please add finishing code
at the end of the product code

Code example : MIS 0320180005 MRP

Fuel type i.e C: Central Heating
E: Electrical Heating
D: Dual Heating (C+E)



A full range of made to order sizes available.

Please ask for details.

n = number of sections

Working pressure (max.) 10 bar

Working temperature (max.) 95 °C

Connections 1/2"

Pipe centers C1 W+90mm

MISTRAL F

Material
Stainless Steel

Stock Finishes
PLS SEE COLOUR
KEY CHART, PAGE 161

Guarantee
20 Years

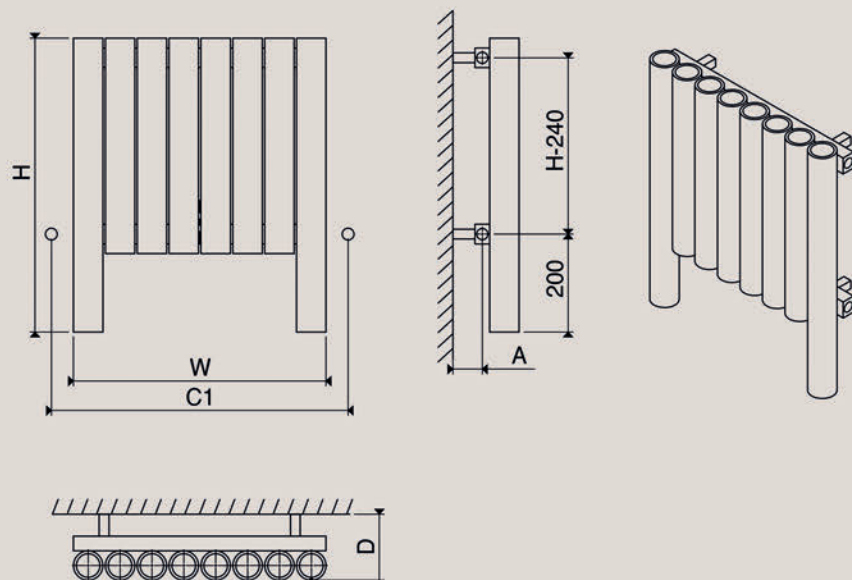
Installation
Horizontal

PRODUCT CODE	Height (mm) H	Width (mm) W	Sections n	Pipe Centers (mm) C1	Wall to pipe Centers A (mm)	Wall Distance D (mm)	Nett Weight (kg)	Water Content (lt)	Fuel Type	Heat Outputs	
										Watts	BTU
MIF 0515076008	760	515	8	605	60-75	135-150	20.3	4.1	C	473	1615
MIF 0865076012	760	865	12	955	60-75	135-150	30.4	6.2	C	710	2423
MIF 1125076016	760	1125	16	1215	60-75	135-150	40.5	8.2	C	947	3230

Please add finishing code
at the end of the product code

Code example : MIF 0515076008 STP

Fuel type i.e C: Central Heating
E: Electrical Heating
D: Dual Heating (C+E)



A full range of made to order sizes available.

Please ask for details.

n = number of sections

Working pressure (max.) 10 bar

Working temperature (max.) 95 °C

Connections 1/2"

Pipe centers C1 W+90mm

PIANO

Material

Stainless Steel

Stock Finishes

PLS SEE COLOUR
KEY CHART, PAGE 161

Guarantee

20 Years

Installation

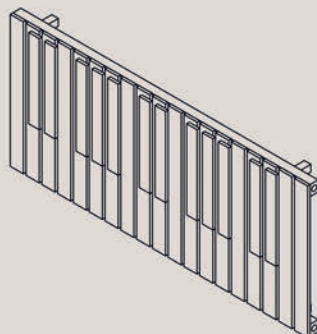
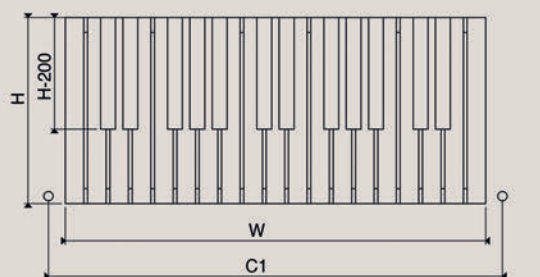
Horizontal

PRODUCT CODE	Height (mm) H	Width (mm) W	Sections n	Pipe Centers (mm) C1	Wall to pipe Centers A (mm)	Wall Distance D (mm)	Nett Weight (kg)	Water Content (lt)	Fuel Type	Heat Outputs	
										Watts	BTU
PIA 1130050019	500	1130	19	1220	60-75	110-125	22.1	7.0	D	859	2931
PIA 1130060019	600	1130	19	1220	60-75	110-125	24.5	7.8	D	1031	3517

Please add finishing code
at the end of the product code

Code example : PIA 1130050019 MRP

Fuel type i.e C: Central Heating
E: Electrical Heating
D: Dual Heating (C+E)



A full range of made to order sizes available.

Please ask for details.

n = number of sections

Working pressure (max.)

10 bar

Working temperature (max.)

95 °C

Connections

1/2"

Pipe centers

C1

W+90mm

KEOPS

Material

Stainless Steel

Stock Finishes

PLS SEE COLOUR
KEY CHART, PAGE 161

Guarantee

20 Years

Installation

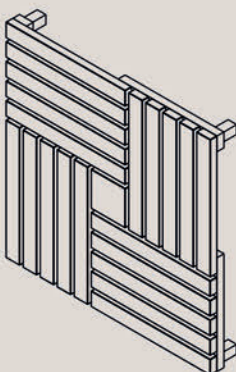
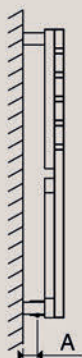
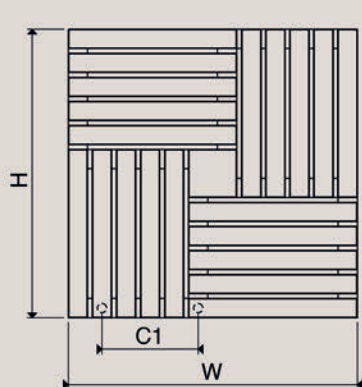
Horizontal

PRODUCT CODE	Height (mm) H	Width (mm) W	Sections n	Pipe Centers (mm) C1	Wall to pipe Centers A (mm)	Wall Distance D (mm)	Nett Weight (kg)	Water Content (lt)	Fuel Type	Heat Outputs	
										Watts	BTU
KEO 0600060020	600	600	20	200	30-45	85-100	8.5	4.2	C	586	1999
KEO 0700070024	700	700	24	250	30-45	85-100	9.9	4.9	C	683	2332
KEO 0800080028	800	800	28	300	30-45	85-100	11.3	5.6	C	781	2665

Please add finishing code
at the end of the product code

Code example : KEO 0800080028 STP

Fuel type i.e C: Central Heating
E: Electrical Heating
D: Dual Heating (C+E)



A full range of made to order sizes available.

Please ask for details.

n = number of sections

Working pressure (max.)

10 bar

Working temperature (max.)

95 °C

Connections

1/2"

LINK

Material

Stainless Steel

Stock Finishes

PLS SEE COLOUR
KEY CHART, PAGE 161

Guarantee

20 Years

Installation

Vertical

PRODUCT CODE	Height (mm) H	Width (mm) W	Sections n	Pipe Centers (mm) C1	Wall to pipe Centers A (mm)	Wall Distance D (mm)	Nett Weight (kg)	Water Content (lt)	Fuel Type	Heat Outputs	
										Watts	BTU
LNK 0240083003	830	240	3	590	80-100	290-310	6.0	3.6	C	339	1155
LNK 0240130005	1300	240	5	1050	80-100	290-310	10.0	6.1	C	564	1925
LNK 0240183507	1835	240	7	1585	80-100	290-310	14.0	8.5	C	790	2695

Please add finishing code
at the end of the product code

Code example : LNK 0240083003 STP

Fuel type i.e C: Central Heating
E: Electrical Heating
D: Dual Heating (C+E)

A full range of made to order sizes available.

Please ask for details.

n = number of sections

Max. working pressure

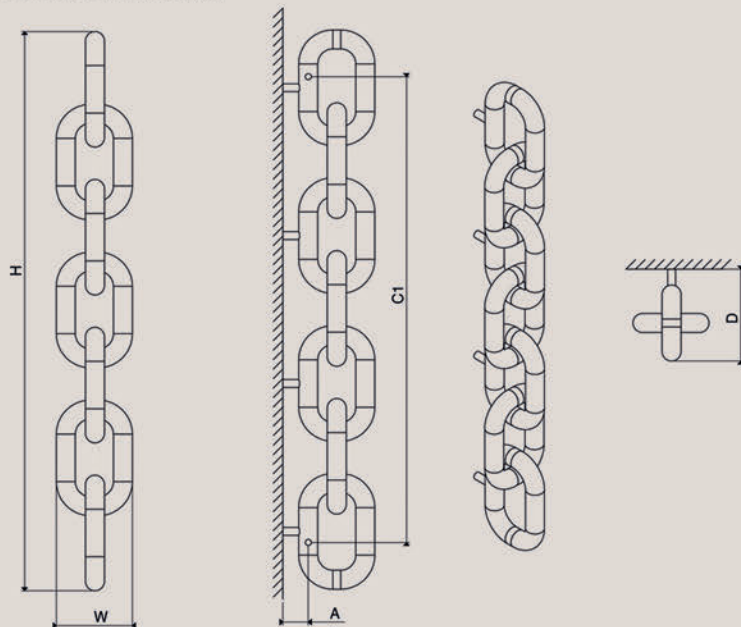
10 bar

Max. working temperature

95 °C

Connections

1/2"



LINKFLOOR

Material

Stainless Steel

Stock Finishes

PLS SEE COLOUR
KEY CHART, PAGE 161

Guarantee

20 Years

Installation

Vertical

PRODUCT CODE	Height (mm) H	Width (mm) W	Sections n	Pipe Centers (mm) C1	Wall to pipe Centers A (mm)	Wall Distance D (mm)	Nett Weight (kg)	Water Content (lt)	Fuel Type	Heat Outputs	
										Watts	BTU
LNF 0240230007	2300	240	7	180	-	240	18.5	10.4	C	966	3298

Please add finishing code
at the end of the product code

Code example : LNF 0240230007 MRP

Fuel type i.e C: Central Heating
E: Electrical Heating
D: Dual Heating (C+E)

A full range of made to order sizes available.

Please ask for details.

n = number of sections

Working pressure (max.)

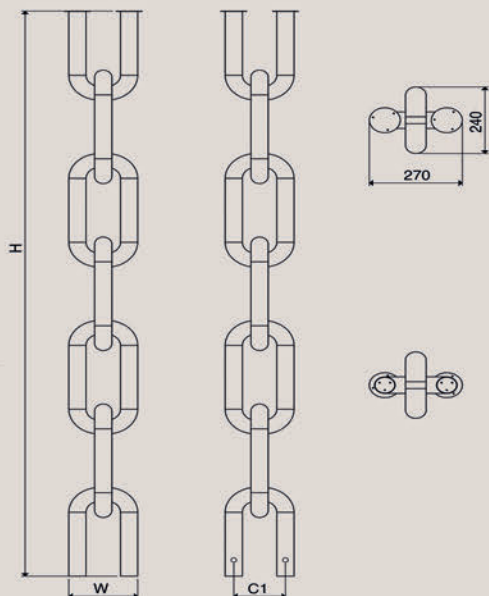
10 bar

Working temperature (max.)

95 °C

Connections

1/2"



SQUA

Material
Stainless Steel

Stock Finishes
PLS SEE COLOUR
KEY CHART, PAGE 161

Guarantee
20 Years

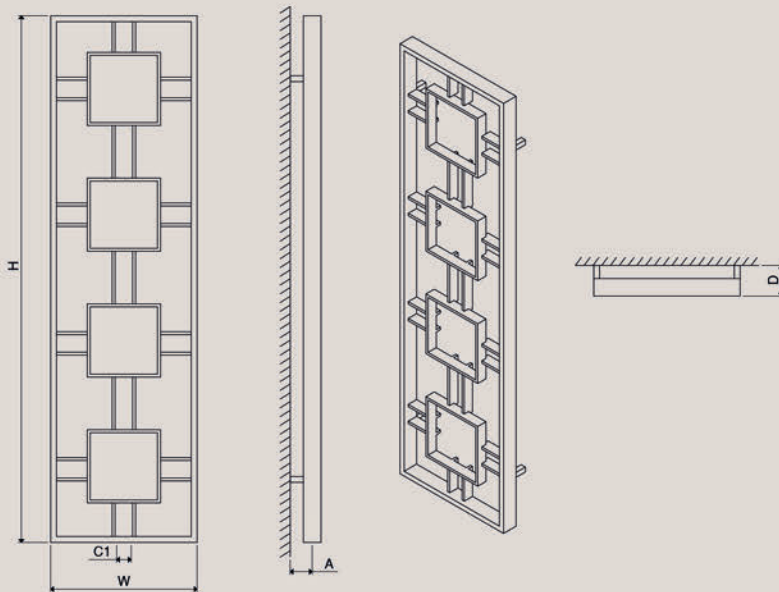
Installation
Vertical

PRODUCT CODE	Height (mm) H	Width (mm) W	Sections n	Pipe Centers (mm) C1	Wall to pipe Centers	Wall Distance	Nett Weight (kg)	Water Content (lt)	Fuel Type	Heat Outputs	
					A (mm)	D (mm)				Watts	BTU
SQU 0500090002	900	500	2	50	75-90	105-120	6.5	1.9	C	743	2535
SQU 0500135003	1350	500	3	50	75-90	105-120	9.4	2.8	C	1114	3802
SQU 0500180004	1800	500	4	50	75-90	105-120	13.2	3.9	C	1486	5069

Please add finishing code
at the end of the product code

Code example : SQU 0500135003 STP

Fuel type i.e C: Central Heating
E: Electrical Heating
D: Dual Heating (C+E)



A full range of made to order sizes available.

Please ask for details.

n = number of sections

Max. working pressure 10 bar

Max. working temperature 95 °C

Connections 1/2"

Pipe center C1 = 50 mm

ORIS

Material
Stainless Steel

Stock Finishes
PLS SEE COLOUR
KEY CHART, PAGE 161

Guarantee
20 Years

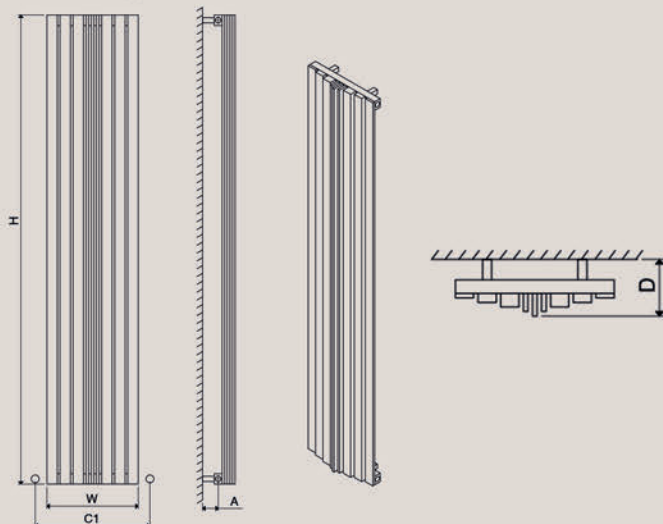
Installation
Vertical

PRODUCT CODE	Height (mm) H	Width (mm) W	Sections n	Pipe Centers (mm) C1	Wall to pipe Centers	Wall Distance	Nett Weight (kg)	Water Content (lt)	Fuel Type	Heat Outputs	
					A (mm)	D (mm)				Watts	BTU
ORI 0350100009	1000	350	9	440	60-75	125-140	7.5	2.6	D	594	2026
ORI 0350150009	1500	350	9	440	60-75	125-140	11.3	3.9	D	890	3038
ORI 0350180009	1800	350	9	440	60-75	125-140	13.5	4.7	D	1069	3646
ORI 0350200009	2000	350	9	440	60-75	125-140	15.0	5.2	D	1187	4051

Please add finishing code
at the end of the product code

Code example : ORI 0350150009 STP

Fuel type i.e C: Central Heating
E: Electrical Heating
D: Dual Heating (C+E)



A full range of made to order sizes available.

Please ask for details.

n = number of sections

Max. working pressure 10 bar

Max. working temperature 95 °C

Connections 1/2"

Pipe center C1 = W + 90 mm

AREN

Material

Stainless Steel

Stock Finishes

PLS SEE COLOUR
KEY CHART, PAGE 161

Guarantee

20 Years

Installation

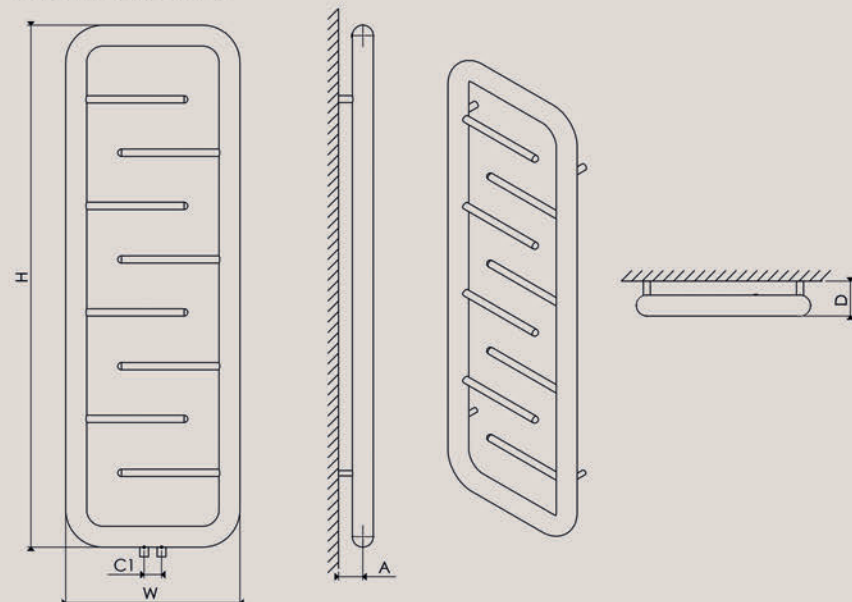
Vertical

PRODUCT CODE	Height (mm) H	Width (mm) W	Sections n	Pipe Centers (mm) C1	Wall to pipe Centers A (mm)	Wall Distance D (mm)	Nett Weight (kg)	Water Content (lt)	Fuel Type	Heat Outputs	
										Watts	BTU
ARE 0500090004	900	500	4	50	80-95	110-125	7.5	6.4	C	469	1599
ARE 0500120006	1200	500	6	50	80-95	110-125	9.0	7.9	C	631	2152
ARE 0500150008	1500	500	8	50	80-95	110-125	10.5	9.6	C	777	2651

Please add finishing code
at the end of the product code

Code example : ARE 0500090004 STP

Fuel type i.e C: Central Heating
E: Electrical Heating
D: Dual Heating (C+E)



A full range of made to order sizes available.

Please ask for details.

n = number of sections

Max. working pressure

10 bar

Max. working temperature

95 °C

Connections

1/2"

Pipe centers

C1

50mm

PAROS

Material

Stainless Steel

Stock Finishes

PLS SEE COLOUR
KEY CHART, PAGE 161

Guarantee

20 Years

Installation

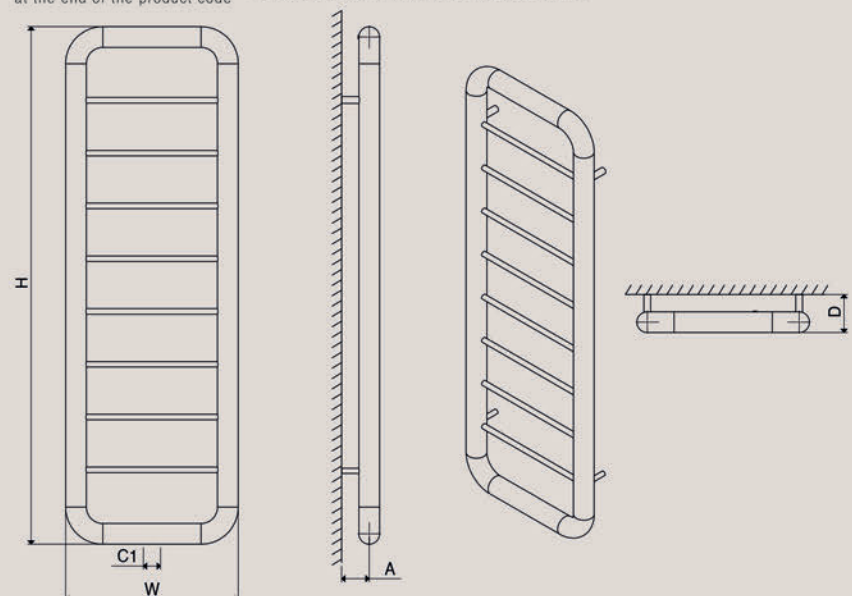
Vertical

PRODUCT CODE	Height (mm) H	Width (mm) W	Sections n	Pipe Centers (mm) C1	Wall to pipe Centers A (mm)	Wall Distance D (mm)	Nett Weight (kg)	Water Content (lt)	Fuel Type	Heat Outputs	
										Watts	BTU
PAR 0500090004	900	500	4	50	80-95	110-125	7.1	6.4	C	479	1636
PAR 0500120006	1200	500	6	50	80-95	110-125	8.2	7.9	C	640	2183
PAR 0500150008	1500	500	8	50	80-95	110-125	9.3	9.6	C	802	2735

Please add finishing code
at the end of the product code

Code example : PAR 0500120006 MRP

Fuel type i.e C: Central Heating
E: Electrical Heating
D: Dual Heating (C+E)



A full range of made to order sizes available.

Please ask for details.

n = number of sections

Max. working pressure

10 bar

Max. working temperature

95 °C

Connections

1/2"

Pipe centers

C1

50mm

SWING

Material
Stainless Steel

Stock Finishes
PLS SEE COLOUR
KEY CHART, PAGE 161

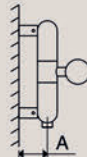
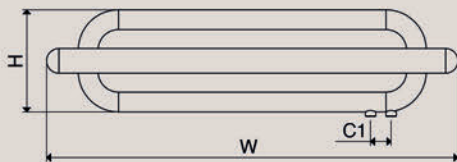
Guarantee
20 Years

Installation
Horizontal

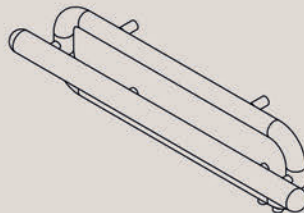
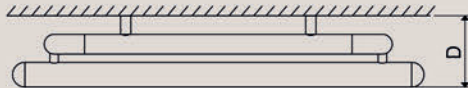
PRODUCT CODE	Height (mm) H	Width (mm) W	Sections n	Pipe Centers (mm) C1	Wall to pipe Centers A (mm)	Wall Distance D (mm)	Nett Weight (kg)	Water Content (lt)	Fuel Type	Heat Outputs	
										Watts	BTU

SWI 1000025001 250 1000 1 50 74-89 158-173 6.0 2.1 C 494 1684
Please add finishing code at the end of the product code **Code example : SWI 1000025001 MRP**

Fuel type i.e C: Central Heating
E: Electrical Heating
D: Dual Heating (C+E)



n = number of sections
Max. working pressure 10 bar
Max. working temperature 95 °C
Connections 1/2"
Pipe centers C1 50mm



REDOX

Material
Stainless Steel

Stock Finishes
PLS SEE COLOUR
KEY CHART, PAGE 161

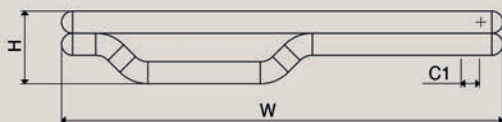
Guarantee
20 Years

Installation
Horizontal

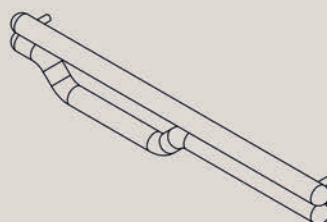
PRODUCT CODE	Height (mm) H	Width (mm) W	Sections n	Pipe Centers (mm) C1	Wall to pipe Centers A (mm)	Wall Distance D (mm)	Nett Weight (kg)	Water Content (lt)	Fuel Type	Heat Outputs	
										Watts	BTU

RDX 1200017002 170 1200 2 50 80-95 110-125 5.5 2.7 C 325 1110
Please add finishing code at the end of the product code **Code example : RDX 1200017002 STP**

Fuel type i.e C: Central Heating
E: Electrical Heating
D: Dual Heating (C+E)



n = number of sections
Max. working pressure 10 bar
Max. working temperature 95 °C
Connections 1/2"
Pipe centers C1 50mm



LEPUS

Material

Stainless Steel

Stock Finishes

PLS SEE COLOUR
KEY CHART, PAGE 161

Guarantee

20 Years

Installation

Horizontal

PRODUCT CODE	Height (mm) H	Width (mm) W	Sections n	Pipe Centers (mm) C1	Wall to pipe Centers A (mm)	Wall Distance D (mm)	Nett Weight (kg)	Water Content (lt)	Fuel Type	Heat Outputs	
										Watts	BTU
LPS 1200028003	280	1200	3	50	80-95	110-125	8.5	3.9	C	476	1625

Please add finishing code
at the end of the product code

Code example : LPS 1200028003 STP

Fuel type i.e C: Central Heating
E: Electrical Heating
D: Dual Heating (C+E)

n = number of sections

Max. working pressure

10 bar

Max. working temperature

95 °C

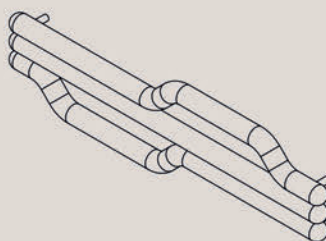
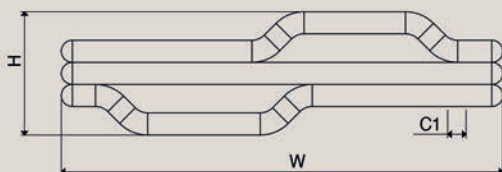
Connections

½"

Pipe centers

C1

50mm



TALENT

Material

Stainless Steel

Stock Finishes

PLS SEE COLOUR
KEY CHART, PAGE 161

Guarantee

20 Years

Installation

Vertical

PRODUCT CODE	Height (mm) H	Width (mm) W	Sections n	Pipe Centers (mm) C1	Wall to pipe Centers A (mm)	Wall Distance D (mm)	Nett Weight (kg)	Water Content (lt)	Fuel Type	Heat Outputs	
										Watts	BTU
TAL 0500078003	780	500	3	50	80-95	110-125	8.4	34.5	C	459	1566
TAL 0500104004	1040	500	4	50	80-95	110-125	10.9	46.0	C	612	2087
TAL 0500130005	1300	500	5	50	80-95	110-125	13.4	57.5	C	765	2609
TAL 0500156006	1560	500	6	50	80-95	110-125	13.4	57.5	C	918	3130

Please add finishing code
at the end of the product code

Code example : TAL 0500078003 MRP

Fuel type i.e C: Central Heating
E: Electrical Heating
D: Dual Heating (C+E)

A full range of made to order sizes available.

Please ask for details.

n = number of sections

10 bar

Max. working pressure

Max. working temperature

95 °C

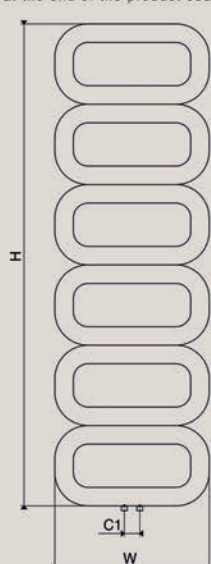
Connections

½"

Pipe centers

C1

50mm



BARO

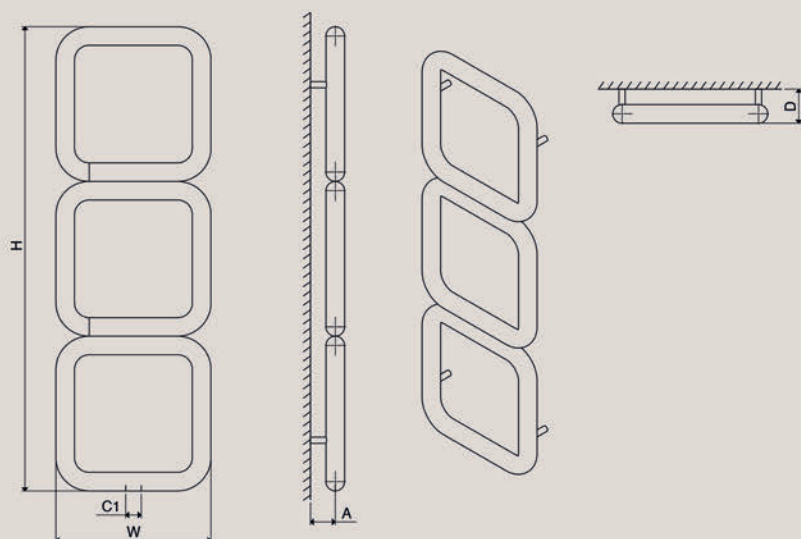
Material	Stock Finishes	Guarantee	Installation
Stainless Steel	PLS SEE COLOUR KEY CHART, PAGE 161	20 Years	Vertical

PRODUCT CODE	Height (mm) H	Width (mm) W	Sections n	Pipe Centers (mm) C1	Wall to pipe Centers	Wall Distance	Nett Weight (kg)	Water Content (lt)	Fuel Type	Heat Outputs	
					A (mm)	D (mm)				Watts	BTU
BAR 0500050001	500	500	1	50	80-95	110-125	4.3	3.2	C	343	1170
BAR 0500100002	1000	500	2	50	80-95	110-125	8.7	6.5	C	690	2356
BAR 0500150003	1500	500	3	50	80-95	110-125	13.0	10	C	1043	3558

Please add finishing code at the end of the product code

Code example : BAR 0500100002 STP

Fuel type i.e
C: Central Heating
E: Electrical Heating
D: Dual Heating (C+E)



A full range of made to order sizes available.

Please ask for details.

n = number of sections

Max. working pressure 10 bar

Max. working temperature 95 °C

Connections 1/2"

Pipe centers C1 50mm

PAN

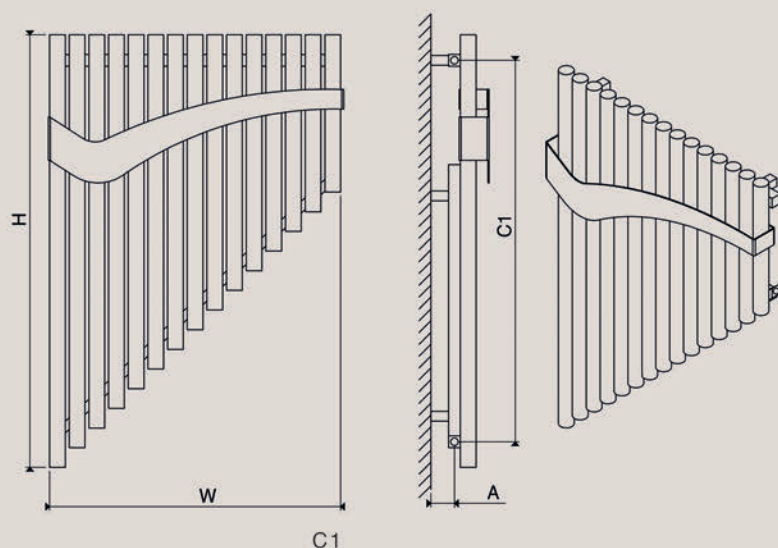
Material	Stock Finishes	Guarantee	Installation
Stainless Steel	PLS SEE COLOUR KEY CHART, PAGE 161	20 Years	Horizontal

PRODUCT CODE	Height (mm) H	Width (mm) W	Sections n	Pipe Centers (mm) C1	Wall to pipe Centers	Wall Distance	Nett Weight (kg)	Water Content (lt)	Fuel Type	Heat Outputs	
					A (mm)	D (mm)				Watts	BTU
PAN 0740110015	1100	740	15	980	60-75	148-163	20.1	51.0	C	1468	5010

Please add finishing code at the end of the product code

Code example : PAN 0740110015 STP

Fuel type i.e
C: Central Heating
E: Electrical Heating
D: Dual Heating (C+E)



A full range of made to order sizes available.

Please ask for details.

n = number of sections

Max. working pressure 10 bar

Max. working temperature 95 °C

Connections 1/2"

Pipe centers C1 980mm

VIVI

Material

Stainless Steel

Stock Finishes

PLS SEE COLOUR
KEY CHART, PAGE 161

Guarantee

20 Years

Installation

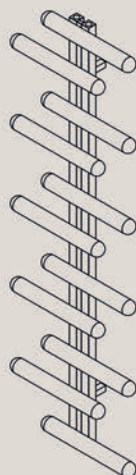
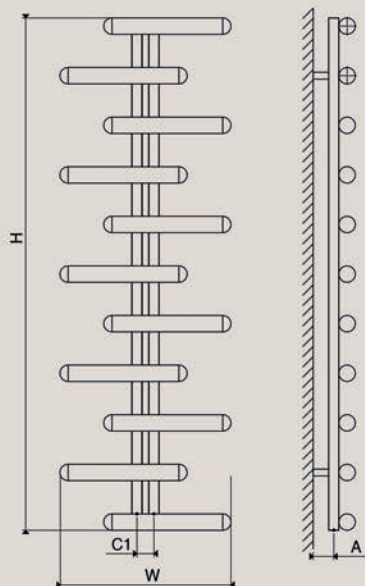
Vertical

PRODUCT CODE	Height (mm) H	Width (mm) W	Sections n	Pipe Centers (mm) C1	Wall to pipe Centers A (mm)	Wall Distance D (mm)	Nett Weight (kg)	Water Content (lt)	Fuel Type	Heat Outputs	
										Watts	BTU
VIV 0500100007	1000	500	7	50	60-75	123-138	6.8	5.3	D	557	1901
VIV 0500150011	1500	500	11	50	60-75	123-138	10.7	8.3	D	876	2987

Please add finishing code
at the end of the product code

Code example : VIV 0500100007 MRP

Fuel type i.e C: Central Heating
E: Electrical Heating
D: Dual Heating (C+E)



A full range of made to order sizes available.

Please ask for details.

n = number of sections

Max. working pressure

Max. working temperature

Connections

Pipe centers

10 bar

95 °C

1/2"

C1

50mm

IVOR

Material

Stainless Steel

Stock Finishes

PLS SEE COLOUR
KEY CHART, PAGE 161

Guarantee

20 Years

Installation

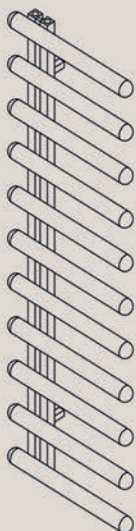
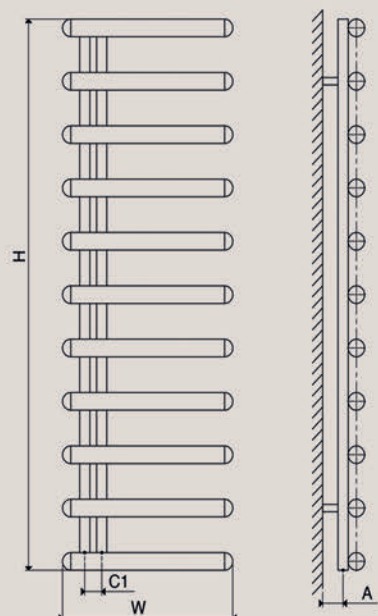
Vertical

PRODUCT CODE	Height (mm) H	Width (mm) W	Sections n	Pipe Centers (mm) C1	Wall to pipe Centers A (mm)	Wall Distance D (mm)	Nett Weight (kg)	Water Content (lt)	Fuel Type	Heat Outputs	
										Watts	BTU
IVO 0500100007	1000	500	7	50	60-75	123-138	6.8	5.3	D	557	1901
IVO 0500150011	1500	500	11	50	60-75	123-138	10.7	8.3	D	876	2987

Please add finishing code
at the end of the product code

Code example : IVO 0500100007 STP

Fuel type i.e C: Central Heating
E: Electrical Heating
D: Dual Heating (C+E)



A full range of made to order sizes available.

Please ask for details.

n = number of sections

Max. working pressure

Max. working temperature

Connections

Pipe centers

10 bar

95 °C

1/2"

C1

50mm

DOMINO

Material

Stainless Steel

Stock Finishes

PLS SEE COLOUR
KEY CHART, PAGE 161

Guarantee

20 Years

Installation

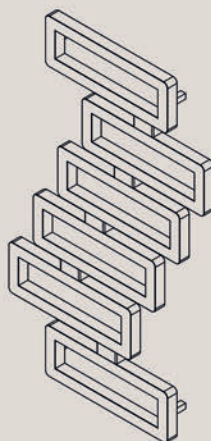
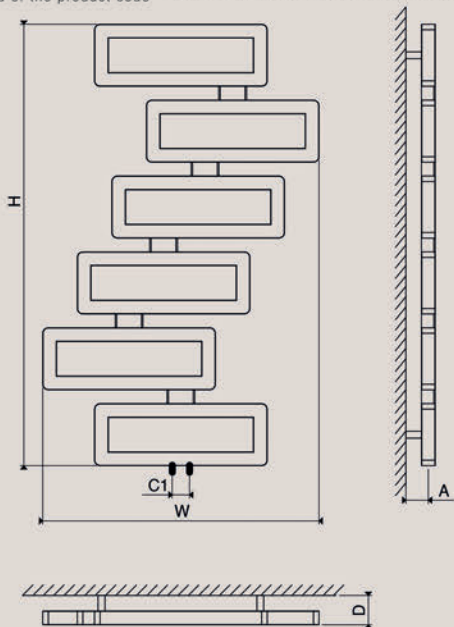
Vertical

PRODUCT CODE	Height (mm) H	Width (mm) W	Sections n	Pipe Centers (mm) C1	Wall to pipe Centers A (mm)	Wall Distance D (mm)	Nett Weight (kg)	Water Content (lt)	Fuel Type	Heat Outputs	
										Watts	BTU

DOM 0800128006 1280 800 6 50 65-80 85-100 11.8 9.0 C 771 2631
Please add finishing code at the end of the product code **Code example : DOM 0800128006 MRP**

Fuel type i.e

C: Central Heating
E: Electrical Heating
D: Dual Heating (C+E)



A full range of made to order sizes available.

Please ask for details.

n = number of sections

Max. working pressure

95 °C

Max. working temperature

1/2"

Connections

Pipe centers

C1

50mm

CLASH

Material

Stainless Steel

Stock Finishes

PLS SEE COLOUR
KEY CHART, PAGE 161

Guarantee

20 Years

Installation

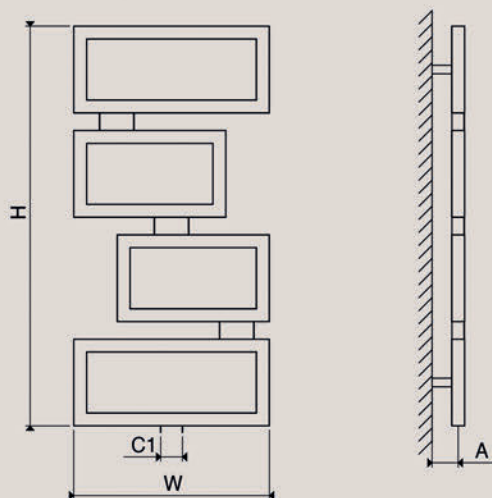
Vertical

PRODUCT CODE	Height (mm) H	Width (mm) W	Sections n	Pipe Centers (mm) C1	Wall to pipe Centers A (mm)	Wall Distance D (mm)	Nett Weight (kg)	Water Content (lt)	Fuel Type	Heat Outputs	
										Watts	BTU

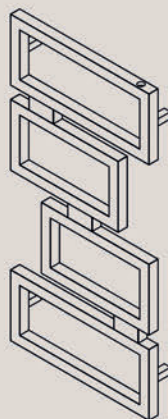
CLS 0450092004 920 450 4 50 65-80 85-100 5.7 4.6 C 400 1366
Please add finishing code at the end of the product code **Code example : CLS 0450092004 MRP**

Fuel type i.e

C: Central Heating
E: Electrical Heating
D: Dual Heating (C+E)



C1



A full range of made to order sizes available.

Please ask for details.

n = number of sections

Max. working pressure

10 bar

Max. working temperature

95 °C

Connections

1/2"

Pipe centers

C1

50mm



HALO

Material

Stainless Steel

Stock Finishes

PLS SEE COLOUR
KEY CHART, PAGE 161

Guarantee

20 Years

Installation

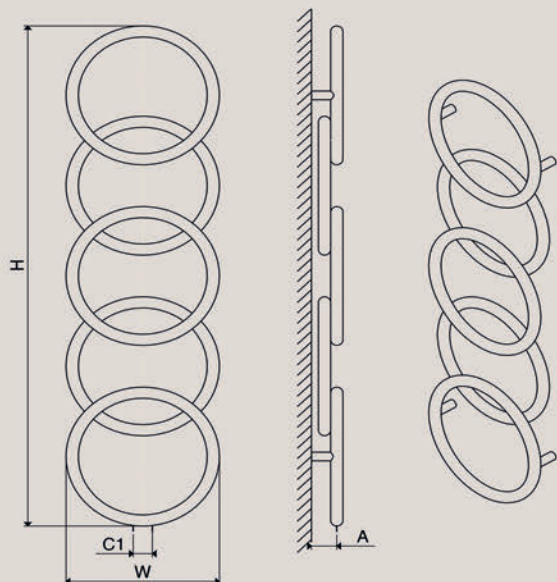
Vertical

PRODUCT CODE	Height (mm) H	Width (mm) W	Sections n	Pipe Centers (mm) C1	Wall to pipe Centers A (mm)	Wall Distance D (mm)	Nett Weight (kg)	Water Content (lt)	Fuel Type	Heat Outputs	
										Watts	BTU
HAL 0400093003	930	400	3	50	66-81	82-97	4.8	5.1	C	355	1212
HAL 0400147005	1470	400	5	50	66-81	82-97	8.0	8.5	C	588	2005

Please add finishing code
at the end of the product code

Code example : HAL 0400093003 STP

Fuel type i.e C: Central Heating
E: Electrical Heating
D: Dual Heating (C+E)



A full range of made to order sizes available.

Please ask for details.

n = number of sections

Max. working pressure

10 bar

Max. working temperature

95 °C

Connections

1/2"

Pipe centers

C1

50mm

SOFTY

Material

Stainless Steel

Stock Finishes

PLS SEE COLOUR
KEY CHART, PAGE 161

Guarantee

20 Years

Installation

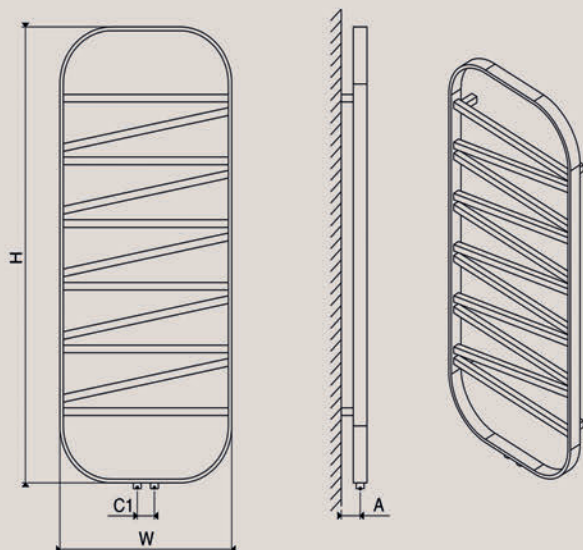
Vertical

PRODUCT CODE	Height (mm) H	Width (mm) W	Sections n	Pipe Centers (mm) C1	Wall to pipe Centers A (mm)	Wall Distance D (mm)	Nett Weight (kg)	Water Content (lt)	Fuel Type	Heat Outputs	
										Watts	BTU
SOF 0500120011	1200	500	11	50	55-70	75-90	9.6	2.3	C	699	2385

Please add finishing code
at the end of the product code

Code example : SOF 0500120011 STP

Fuel type i.e C: Central Heating
E: Electrical Heating
D: Dual Heating (C+E)



A full range of made to order sizes available.

Please ask for details.

n = number of sections

Max. working pressure

10 bar

Max. working temperature

95 °C

Connections

1/2"

Pipe centers

C1

50mm

KNIGHT

Material
Stainless Steel

Stock Finishes
PLS SEE COLOUR
KEY CHART, PAGE 161

Guarantee
20 Years

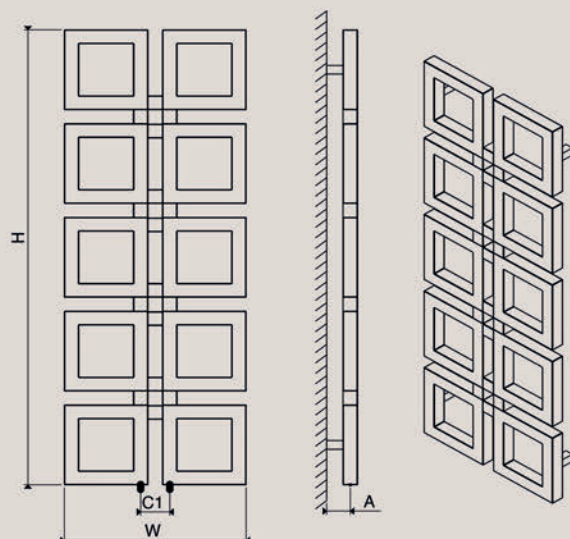
Installation
Vertical

PRODUCT CODE	Height (mm) H	Width (mm) W	Sections n	Pipe Centers (mm) C1	Wall to pipe Centers A (mm)	Wall Distance D (mm)	Nett Weight (kg)	Water Content (lt)	Fuel Type	Heat Outputs	
										Watts	BTU
KNG 0500077006	770	500	6	80	65-80	85-100	10.1	8.5	C	574	1959
KNG 0500104008	1040	500	8	80	65-80	85-100	13.0	11.4	C	765	2611
KNG 0500131010	1310	500	10	80	65-80	85-100	16.2	14.2	C	957	3264

Please add finishing code
at the end of the product code

Code example : KNG 0500077006 MRP

Fuel type i.e C: Central Heating
E: Electrical Heating
D: Dual Heating (C+E)



A full range of made to order sizes available.

Please ask for details.

n = number of sections

Max. working pressure

10 bar

Max. working temperature

95 °C

Connections

1/2"

Pipe centers

C1

80mm



JACK

Material
Stainless Steel

Stock Finishes
PLS SEE COLOUR
KEY CHART, PAGE 161

Guarantee
20 Years

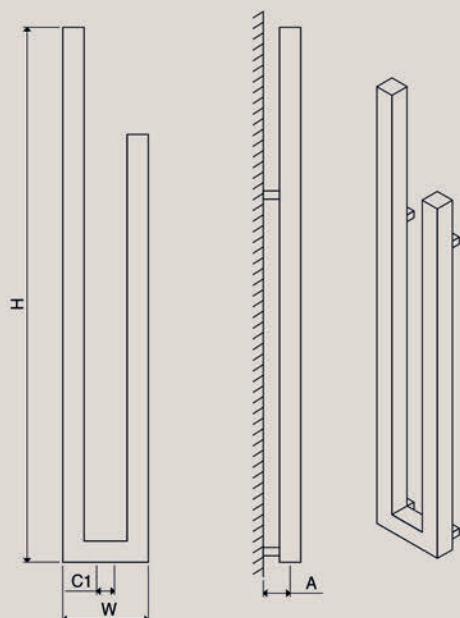
Installation
Vertical

PRODUCT CODE	Height (mm) H	Width (mm) W	Sections n	Pipe Centers (mm) C1	Wall to pipe Centers A (mm)	Wall Distance D (mm)	Nett Weight (kg)	Water Content (lt)	Fuel Type	Heat Outputs	
										Watts	BTU
JAC 0240150002	1500	240	2	50	75-90	105-120	6.9	5.7	D	395	1349

Please add finishing code
at the end of the product code

Code example : JAC 0240150002 MRP

Fuel type i.e C: Central Heating
E: Electrical Heating
D: Dual Heating (C+E)



A full range of made to order sizes available.

Please ask for details.

n = number of sections

Max. working pressure

10 bar

Max. working temperature

95 °C

Connections

1/2"

Pipe centers

C1

50mm



ECLIPSE

Material

Stainless Steel

Stock Finishes

PLS SEE COLOUR
KEY CHART, PAGE 161

Guarantee

20 Years

Installation

Vertical

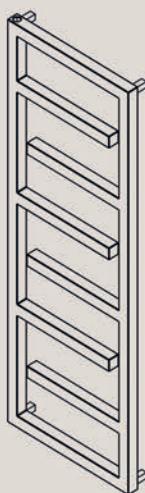
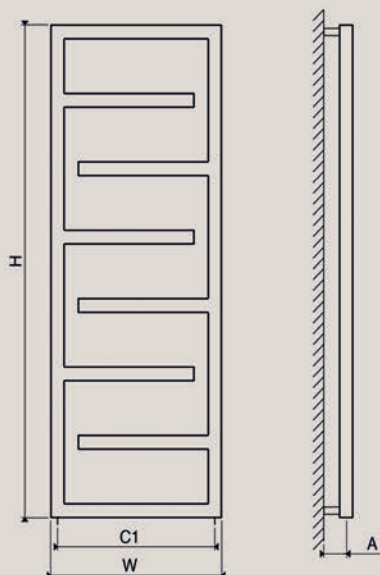
PRODUCT CODE	Height (mm) H	Width (mm) W	Sections n	Pipe Centers (mm) C1	Wall to pipe Centers A (mm)	Wall Distance D (mm)	Nett Weight (kg)	Water Content (lt)	Fuel Type	Heat Outputs	
										Watts	BTU
ECL 0500088003	880	500	3	460	65-80	85-100	6.6	5.1	D	447	1526
ECL 0500137006	1370	500	6	460	65-80	85-100	18.3	13.9	D	1230	4197

Please add finishing code
at the end of the product code

Code example : ECL 0500088003 STP

Fuel type i.e

C: Central Heating
E: Electrical Heating
D: Dual Heating (C+E)



A full range of made to order sizes available.

Please ask for details.

n = number of sections

Max. working pressure

10 bar

Max. working temperature

95 °C

Connections

1/2"

Pipe centers

C1 W-40mm

ARLEN

Material

Stainless Steel

Stock Finishes

PLS SEE COLOUR
KEY CHART, PAGE 161

Guarantee

20 Years

Installation

Vertical

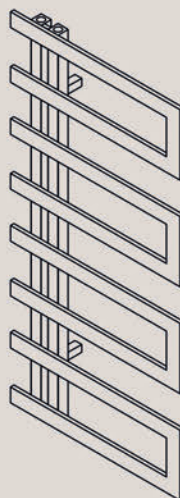
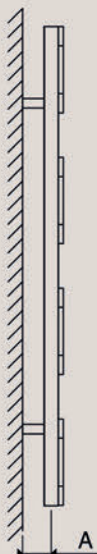
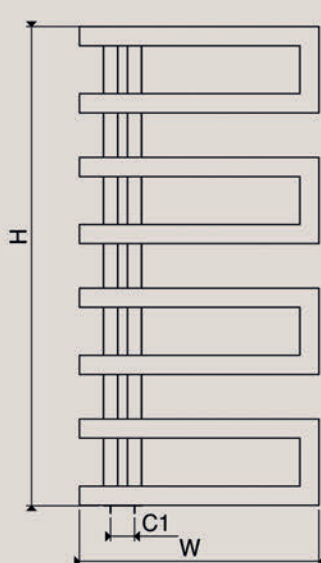
PRODUCT CODE	Height (mm) H	Width (mm) W	Sections n	Pipe Centers (mm) C1	Wall to pipe Centers A (mm)	Wall Distance D (mm)	Nett Weight (kg)	Water Content (lt)	Fuel Type	Heat Outputs	
										Watts	BTU
ARL 0500100008	1000	500	8	50	60-75	85-100	7.2	2.5	D	490	1672

Please add finishing code
at the end of the product code

Code example : ARL 0500100008 STP

Fuel type i.e

C: Central Heating
E: Electrical Heating
D: Dual Heating (C+E)



A full range of made to order sizes available.

Please ask for details.

n = number of sections

Max. working pressure

10 bar

Max. working temperature

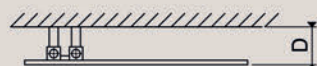
95 °C

Connections

1/2"

Pipe centers

C1 50mm



ALIAS

Material
Stainless Steel

Stock Finishes
PLS SEE COLOUR
KEY CHART, PAGE 161

Guarantee
20 Years

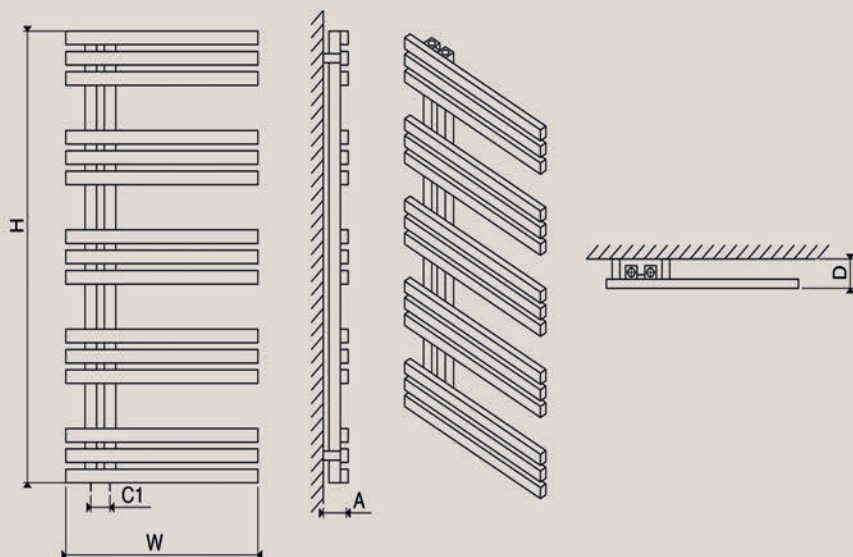
Installation
Vertical

PRODUCT CODE	Height (mm) H	Width (mm) W	Sections n	Pipe Centers (mm) C1	Wall to pipe Centers A (mm)	Wall Distance D (mm)	Nett Weight (kg)	Water Content (lt)	Fuel Type	Heat Outputs	
										Watts	BTU
ALI 0500100015	1000	500	15	50	30-45	65-80	9.6	4.9	D	480	1639

Please add finishing code
at the end of the product code

Code example : ALI 0500100015 STP

Fuel type i.e C: Central Heating
E: Electrical Heating
D: Dual Heating (C+E)



A full range of made to order sizes available.

Please ask for details.

n = number of sections

Max. working pressure

10 bar

Max. working temperature

95 °C

Connections

1/2"

Pipe centers

C1

50mm

ADORE

Material
Stainless Steel

Stock Finishes
PLS SEE COLOUR
KEY CHART, PAGE 161

Guarantee
20 Years

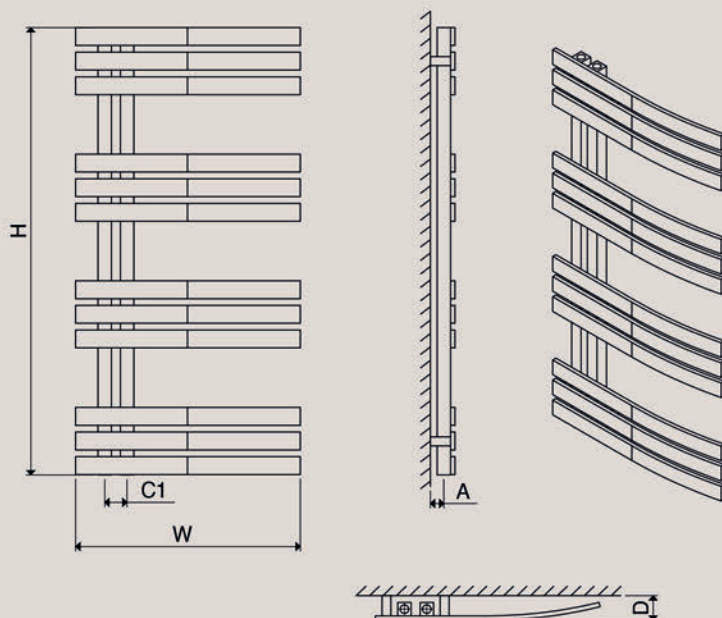
Installation
Vertical

PRODUCT CODE	Height (mm) H	Width (mm) W	Sections n	Pipe Centers (mm) C1	Wall to pipe Centers A (mm)	Wall Distance D (mm)	Nett Weight (kg)	Water Content (lt)	Fuel Type	Heat Outputs	
										Watts	BTU
ADR 0500100012	1000	500	12	50	30-45	55-70	7.7	3.9	D	465	1587

Please add finishing code
at the end of the product code

Code example : ADR 0500100012 STP

Fuel type i.e C: Central Heating
E: Electrical Heating
D: Dual Heating (C+E)



A full range of made to order sizes available.

Please ask for details.

n = number of sections

Max. working pressure

10 bar

Max. working temperature

95 °C

Connections

1/2"

Pipe centers

C1

50mm

SNOWFLAKE

Material

Stainless Steel

Stock Finishes

PLS SEE COLOUR
KEY CHART, PAGE 161

Guarantee

20 Years

Installation

Horizontal

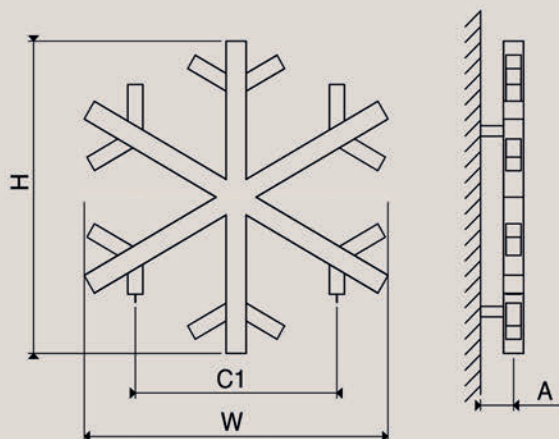
PRODUCT CODE	Height (mm) H	Width (mm) W	Sections n	Pipe Centers (mm) C1	Wall to pipe Centers A (mm)	Wall Distance D (mm)	Nett Weight (kg)	Water Content (lt)	Fuel Type	Heat Outputs	
										Watts	BTU
SNW 0600060006	600	600	6	360	65-80	85-100	5.5	3.6	C	333	1137

Please add finishing code
at the end of the product code

Code example : SNW 0600060006 STP

Fuel type i.e

C: Central Heating
E: Electrical Heating
D: Dual Heating (C+E)



n = number of sections

Max. working pressure

10 bar

Max. working temperature

95 °C

Connections

1/2"

Pipe centers

C1 360mm



IBIZA

Material

Stainless Steel

Stock Finishes

PLS SEE COLOUR
KEY CHART, PAGE 161

Guarantee

20 Years

Installation

Vertical

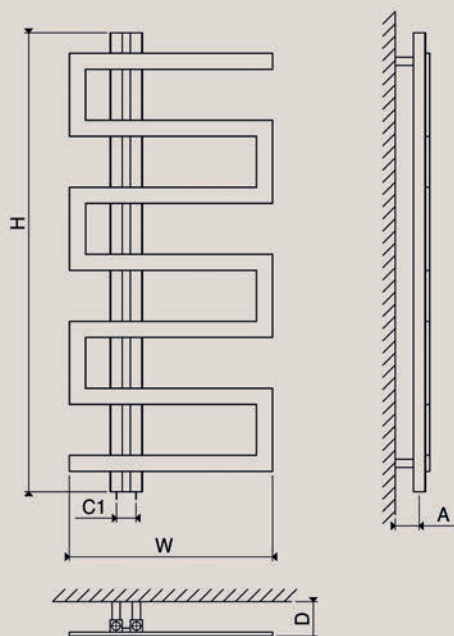
PRODUCT CODE	Height (mm) H	Width (mm) W	Sections n	Pipe Centers (mm) C1	Wall to pipe Centers A (mm)	Wall Distance D (mm)	Nett Weight (kg)	Water Content (lt)	Fuel Type	Heat Outputs	
										Watts	BTU
IBZ 0500044003	440	500	3	50	60-75	85-100	3.1	0.9	D	293	999
IBZ 0500077005	770	500	5	50	60-75	85-100	5.2	1.6	D	371	1266
IBZ 0500113007	1130	500	7	50	60-75	85-100	7.2	2.2	D	459	1566

Please add finishing code
at the end of the product code

Code example : IBZ 0500077005 MRP

Fuel type i.e

C: Central Heating
E: Electrical Heating
D: Dual Heating (C+E)



A full range of made to order sizes available.

Please ask for details.

n = number of sections

Max. working pressure

10 bar

Max. working temperature

95 °C

Connections

1/2"

Pipe centers

C1 50mm

JAZZ

Material	Stock Finishes	Guarantee	Installation
Stainless Steel	PLS SEE COLOUR KEY CHART, PAGE 161	20 Years	Vertical

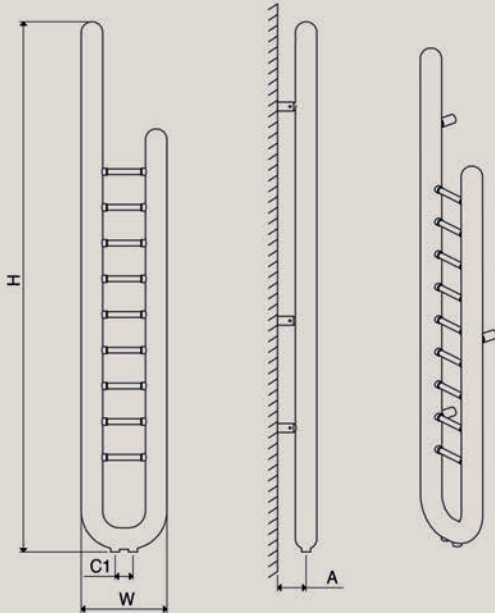
PRODUCT CODE	Height (mm) H	Width (mm) W	Sections n	Pipe Centers (mm) C1	Wall to pipe Centers A (mm)	Wall Distance D (mm)	Nett Weight (kg)	Water Content (lt)	Fuel Type	Heat Outputs	
										Watts	BTU

JAZ 0240150009 1500 240 9 50 80-95 110-125 6.5 6.7 C 360 1229

Please add finishing code
at the end of the product code

Code example : JAZ 0240150009 MRP

Fuel type i.e C: Central Heating
E: Electrical Heating
D: Dual Heating (C+E)



n = number of sections

Max. working pressure

10 bar

Max. working temperature

95 °C

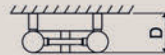
Connections

1/2"

Pipe center

C1

50 mm



MIYA

Material	Stock Finishes	Guarantee	Installation
Stainless Steel	PLS SEE COLOUR KEY CHART, PAGE 161	20 Years	Horizontal

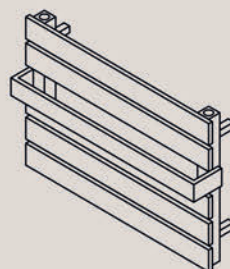
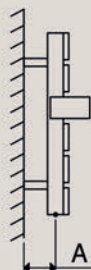
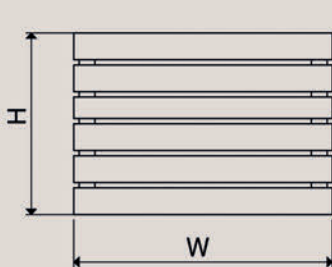
PRODUCT CODE	Height (mm) H	Width (mm) W	Sections n	Pipe Centers (mm) C1	Wall to pipe Centers A	Wall Distance D (mm)	Nett Weight (kg)	Water Content (lt)	Fuel Type	Heat Outputs	
										Watts	BTU

MIY 0500034006 340 500 6 440 60-75 125-140 5.8 1.6 C 513 1749

Please add finishing code
at the end of the product code

Code example : MIY 050034006 MRP

Fuel type i.e C: Central Heating
E: Electrical Heating
D: Dual Heating (C+E)



A full range of made to order sizes available.

Please ask for details.

n = number of sections

Max. working pressure

10 bar

Max. working temperature

95 °C

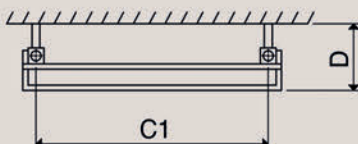
Connections

1/2"

Pipe center

C1

W - 60 mm



RONI

Material
Stainless Steel

Stock Finishes
PLS SEE COLOUR
KEY CHART, PAGE 161

Guarantee
20 Years

Installation
Horizontal

PRODUCT CODE	Height (mm) H	Width (mm) W	Sections n	Pipe Centers (mm) C1	Wall to pipe Centers A (mm)	Wall Distance D (mm)	Nett Weight (kg)	Water Content (lt)	Fuel Type	Heat Outputs	
										Watts	BTU
ROI 0640040001	400	640	1	730	66-86	82-102	2.5	0.8	C	190	650
ROI 1000040002	400	1000	2	1090	66-86	82-102	5.0	1.6	C	381	1300

Please add finishing code
at the end of the product code

Code example : ROI 0640040001 STP

Fuel type i.e
C: Central Heating
E: Electrical Heating
D: Dual Heating (C+E)

A full range of made to order sizes available.

Please ask for details.

n = number of sections

Max. working pressure

10 bar

Max. working temperature

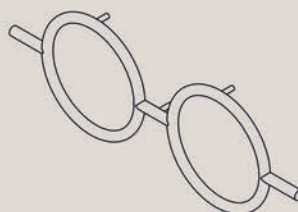
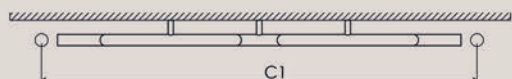
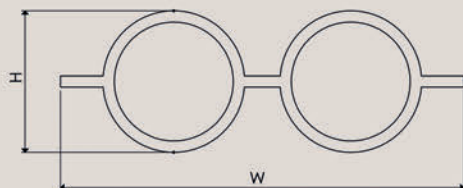
95 °C

Connections

1/2"

Pipe center

C1 W + 90 mm



CRUX

Material
Stainless Steel

Stock Finishes
PLS SEE COLOUR
KEY CHART, PAGE 161

Guarantee
20 Years

Installation
Vertical

PRODUCT CODE	Height (mm) H	Width (mm) W	Sections n	Pipe Centers (mm) C1 C2	Wall to pipe Centers (mm) A1 A2	Wall Distance D (mm)	Nett Weight (kg)	Water Content (lt)	Fuel Type	Heat Outputs	
										Watts	BTU
CRX 0400080002	800	400	2	368 890	66 98	115-130	3.6	0.8	C	305	1040

Please add finishing code
at the end of the product code

Code example : CRX 0400080002 MRP

Fuel type i.e
C: Central Heating
E: Electrical Heating
D: Dual Heating (C+E)

n = number of sections

Max. working pressure

10 bar

Max. working temperature

95 °C

Connections

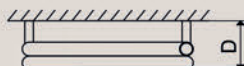
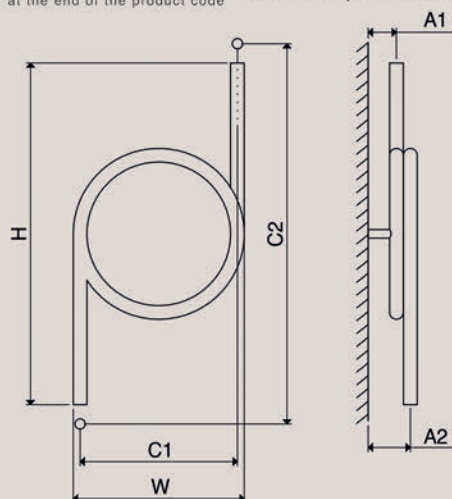
1/2"

Vertical pipe center

C2 890 mm

Pipe center

C1 368 mm



ZIGZAG

Material

Stainless Steel

Stock Finishes

PLS SEE COLOUR
KEY CHART, PAGE 161

Guarantee

20 Years

Installation

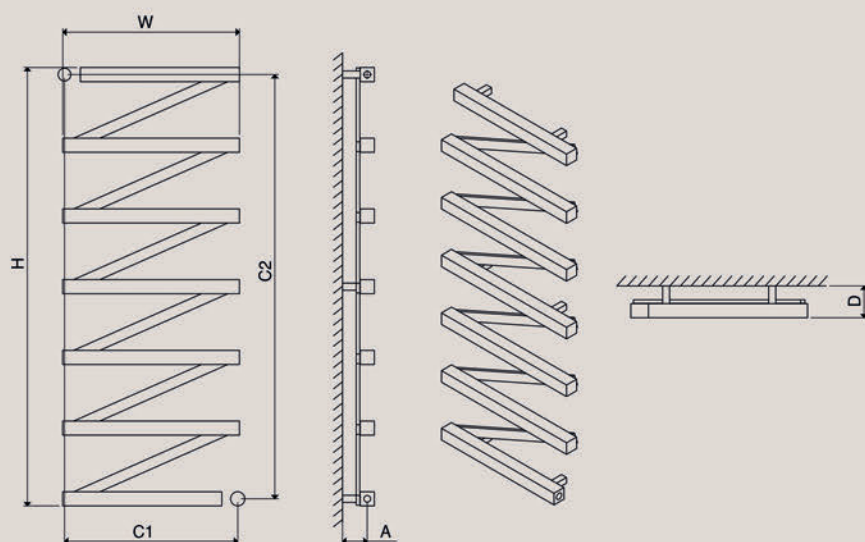
Vertical

PRODUCT CODE	Height (mm) H	Width (mm) W	Sections n	Pipe Centers (mm)		Wall to pipe Centers A (mm)	Wall Distance D (mm)	Nett Weight (kg)	Water Content (lt)	Fuel Type	Heat Outputs	
				C1	C2						Watts	BTU
ZIG 0500064004	640	500	4	490	600	65-80	85-100	4.5	2.4	C	367	1251
ZIG 0500124007	1240	500	7	490	1200	65-80	85-100	9.0	4.8	C	710	2421
ZIG 0500164009	1640	500	9	490	1600	65-80	85-100	12.0	6.4	C	867	2957

Please add finishing code
at the end of the product code

Code example : ZIG 0500164009 STP

Fuel type i.e C: Central Heating
E: Electrical Heating
D: Dual Heating (C+E)



A full range of made to order sizes available.

Please ask for details.

n = number of sections 10 bar

Max. working pressure 95 °C

Max. working temperature 1/2"

Connections

Vertical pipe center C2 H - 40 mm

Pipe center C1 W - 10 mm

WOODSTOCK

Material

Stainless Steel

Stock Finishes

PLS SEE COLOUR
KEY CHART, PAGE 161

Guarantee

20 Years

Installation

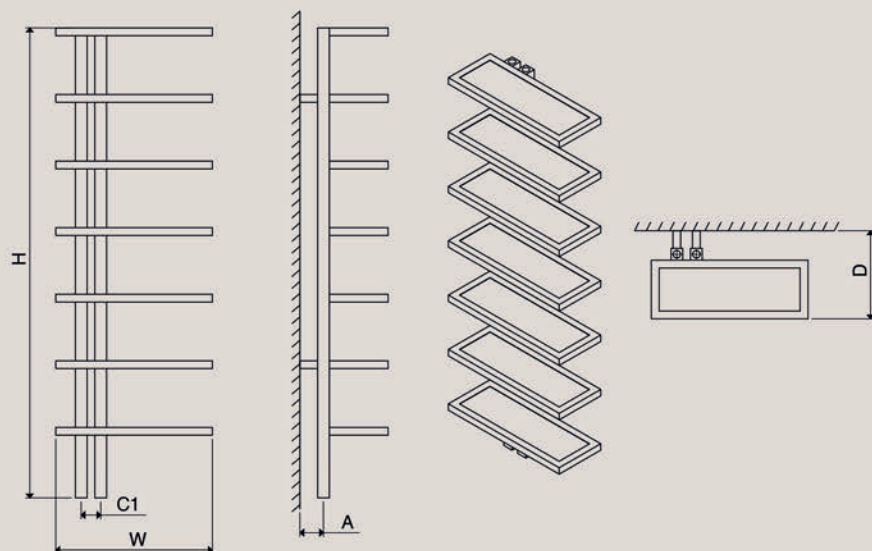
Vertical

PRODUCT CODE	Height (mm) H	Width (mm) W	Sections n	Pipe Centers (mm) C1	Wall to pipe Centers A (mm)	Wall Distance D (mm)	Nett Weight (kg)	Water Content (lt)	Fuel Type	Heat Outputs	
										Watts	BTU
WDS 0400120007	1200	400	7	50	60-75	225-240	12.3	3.5	D	583	1988

Please add finishing code
at the end of the product code

Code example : WDS 0400120007 STP

Fuel type i.e C: Central Heating
E: Electrical Heating
D: Dual Heating (C+E)



A full range of made to order sizes available.

Please ask for details.

n = number of sections 10 bar

Max. working pressure 95 °C

Max. working temperature 1/2"

Connections

Pipe center C1 50 mm

HERRING

Material

Stainless Steel

Stock Finishes

PLS SEE COLOUR
KEY CHART, PAGE 161

Guarantee

20 Years

Installation

Vertical

PRODUCT CODE	Height (mm) H	Width (mm) W	Sections n	Pipe Centers (mm) C1	Wall to pipe Centers A (mm)	Wall Distance D (mm)	Nett Weight (kg)	Water Content (lt)	Fuel Type	Heat Outputs	
										Watts	BTU
HRR 0600100007	1000	600	7	50	60-75	115-130	7.5	3.8	D	567	1934

Please add finishing code
at the end of the product code **Code example : HRR 0600100007 MRP**

Fuel type i.e C: Central Heating
E: Electrical Heating
D: Dual Heating (C+E)

A full range of made to order sizes available.

Please ask for details.

n = number of sections

Max. working pressure

10 bar

Max. working temperature

95 °C

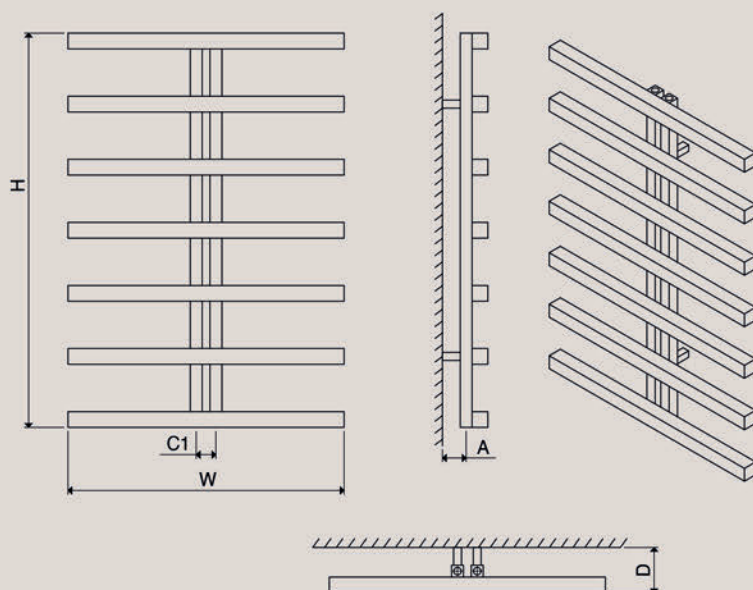
Connections

1/2"

Pipe center

C1

50 mm



ELDORADO

Material

Stainless Steel

Stock Finishes

PLS SEE COLOUR
KEY CHART, PAGE 161

Guarantee

20 Years

Installation

Vertical

PRODUCT CODE	Height (mm) H	Width (mm) W	Sections n	Pipe Centers (mm) C1	Wall to pipe Centers A (mm)	Wall Distance D (mm)	Nett Weight (kg)	Water Content (lt)	Fuel Type	Heat Outputs	
										Watts	BTU
ELD 0400094010	940	400	10	50	65-85	84-104	10.5	6.5	C	665	2269
ELD 0500094010	940	500	10	50	65-85	84-104	14.5	7.8	C	876	2990

Please add finishing code
at the end of the product code **Code example : ELD 0500094010 STP**

Fuel type i.e C: Central Heating
E: Electrical Heating
D: Dual Heating (C+E)

A full range of made to order sizes available.

Please ask for details.

n = number of sections

Max. working pressure

10 bar

Max. working temperature

95 °C

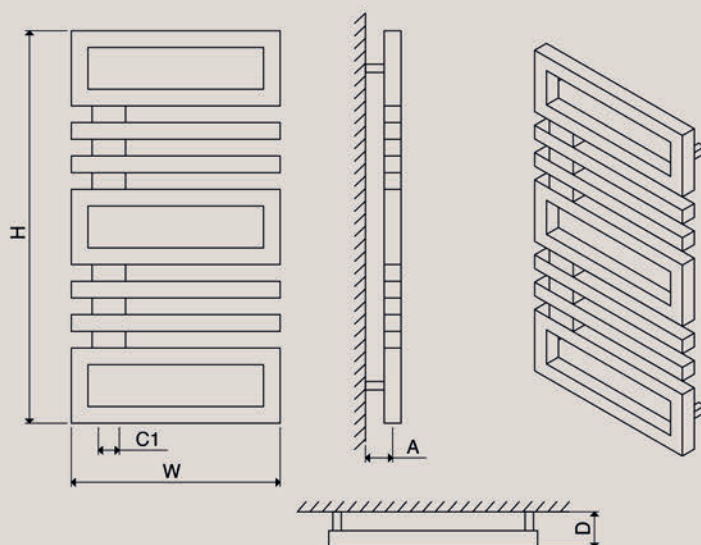
Connections

1/2"

Pipe center

C1

50 mm



FLAP

Material
Stainless Steel

Stock Finishes
PLS SEE COLOUR
KEY CHART, PAGE 161

Guarantee
20 Years

Installation
Vertical

PRODUCT CODE	Height (mm) H	Width (mm) W	Sections n	Pipe Centers (mm) C1	Wall to pipe Centers A (mm)	Wall Distance D (mm)	Nett Weight (kg)	Water Content (lt)	Fuel Type	Heat Outputs	
										Watts	BTU
FLP 0840085002	850	840	2	940	60-75	85-100	5.3	3.5	D	410	1397
FLP 0840130003	1300	840	3	1390	60-75	85-100	7.8	5.2	D	625	2134
FLP 0840175004	1750	840	4	1840	60-75	85-100	10.4	7.0	D	787	2686

Please add finishing code
at the end of the product code

Code example : FLP 0840130003 STP

Fuel type i.e C: Central Heating
E: Electrical Heating
D: Dual Heating (C+E)

A full range of made to order sizes available.

Please ask for details.

n = number of sections

Max. working pressure

10 bar

Max. working temperature

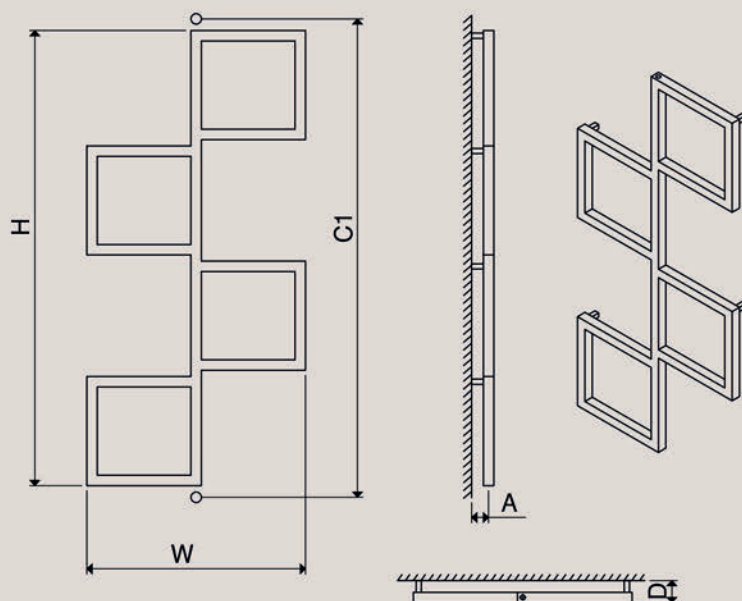
95 °C

Connections

1/2"

Pipe center

C1 H + 90 mm



BECK

Material
Stainless Steel

Stock Finishes
PLS SEE COLOUR
KEY CHART, PAGE 161

Guarantee
20 Years

Installation
Vertical

PRODUCT CODE	Height (mm) H	Width (mm) W	Sections n	Pipe Centers (mm) C1	Wall to pipe Centers A (mm)	Wall Distance D (mm)	Nett Weight (kg)	Water Content (lt)	Fuel Type	Heat Outputs	
										Watts	BTU
BCK 0450092004	920	450	4	50	60-75	75-90	6.8	3.2	C	478	1630
BCK 0450140006	1400	450	6	50	60-75	75-90	10.2	4.8	C	717	2448

Please add finishing code
at the end of the product code

Code example : BCK 0450140006 MRP

Fuel type i.e C: Central Heating
E: Electrical Heating
D: Dual Heating (C+E)

A full range of made to order sizes available.

Please ask for details.

n = number of sections

Max. working pressure

10 bar

Max. working temperature

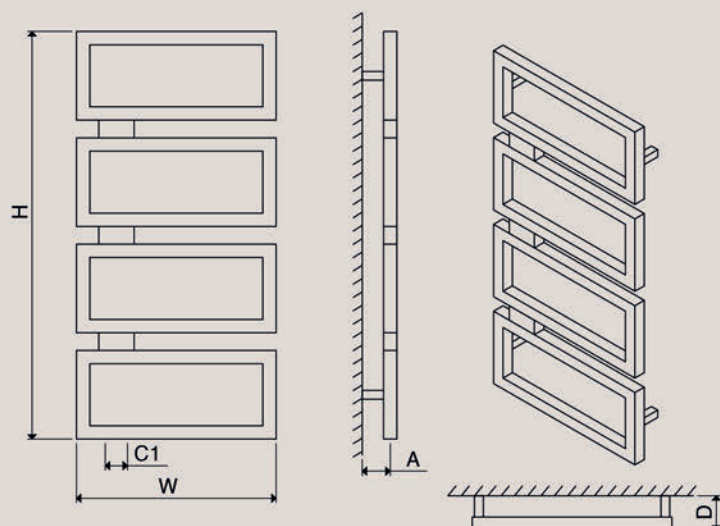
95 °C

Connections

1/2"

Pipe center

C1 50 mm



TODOR

Material
Stainless Steel

Stock Finishes
PLS SEE COLOUR
KEY CHART, PAGE 161

Guarantee
20 Years

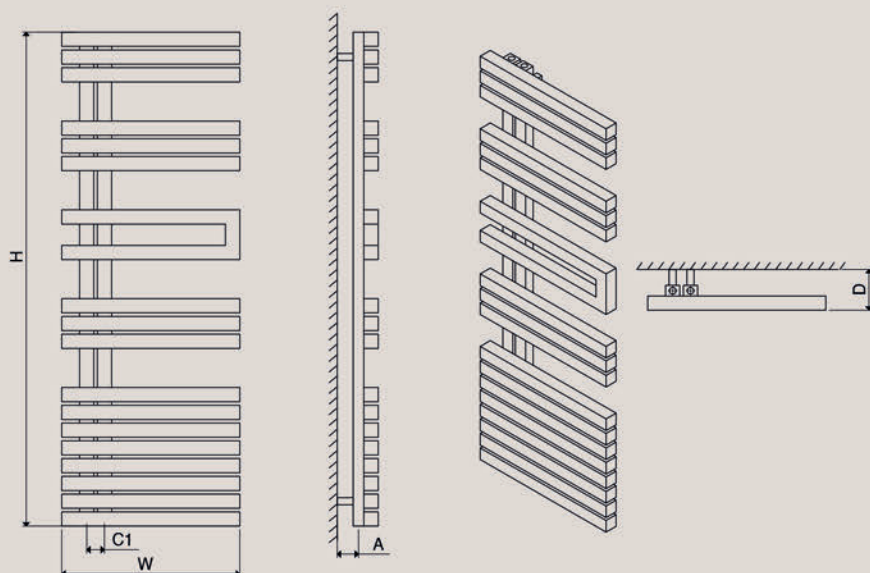
Installation
Vertical

PRODUCT CODE	Height (mm) H	Width (mm) W	Sections n	Pipe Centers (mm) C1	Wall to pipe Centers A (mm)	Wall Distance D (mm)	Nett Weight (kg)	Water Content (lt)	Fuel Type	Heat Outputs	
										Watts	BTU
TOD 0500089013	890	500	13	50	60-75	115-130	14.5	7.8	D	1052	3591
TOD 0500114016	1140	500	16	50	60-75	115-130	18.0	9.6	D	1295	4419
TOD 0500139019	1390	500	19	50	60-75	115-130	21.4	11.4	D	1538	5248
TOD 0500159022	1590	500	22	50	60-75	115-130	24.8	13.2	D	1781	6077

Please add finishing code
at the end of the product code

Code example : TOD 0500114016 MRP

Fuel type i.e C: Central Heating
E: Electrical Heating
D: Dual Heating (C+E)



A full range of made to order sizes available.

Please ask for details.

n = number of sections

Max. working pressure

10 bar

Max. working temperature

95 °C

Connections

1/2"

Pipe center

C1

50 mm

CASTOR

Material
Stainless Steel

Stock Finishes
PLS SEE COLOUR
KEY CHART, PAGE 161

Guarantee
20 Years

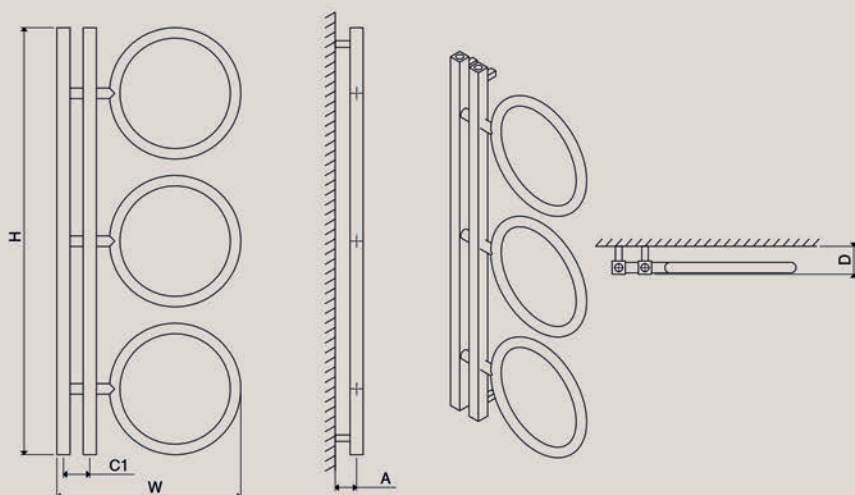
Installation
Vertical

PRODUCT CODE	Height (mm) H	Width (mm) W	Sections n	Pipe Centers (mm) C1	Wall to pipe Centers A (mm)	Wall Distance D (mm)	Nett Weight (kg)	Water Content (lt)	Fuel Type	Heat Outputs	
										Watts	BTU
CAS 0560085002	850	560	2	80	60-75	75-90	4.2	2.3	D	411	1403
CAS 0560130003	1300	560	3	80	60-75	75-90	5.2	2.8	D	427	1457
CAS 0560175004	1750	560	4	80	60-75	75-90	6.2	3.2	D	756	2578

Please add finishing code
at the end of the product code

Code example : CAS 0560085002 MRP

Fuel type i.e C: Central Heating
E: Electrical Heating
D: Dual Heating (C+E)



A full range of made to order sizes available.

Please ask for details.

n = number of sections

Max. working pressure

10 bar

Max. working temperature

95 °C

Connections

1/2"

Pipe center

C1

80 mm

EXODUS

Material
Stainless Steel

Stock Finishes
PLS SEE COLOUR
KEY CHART, PAGE 161

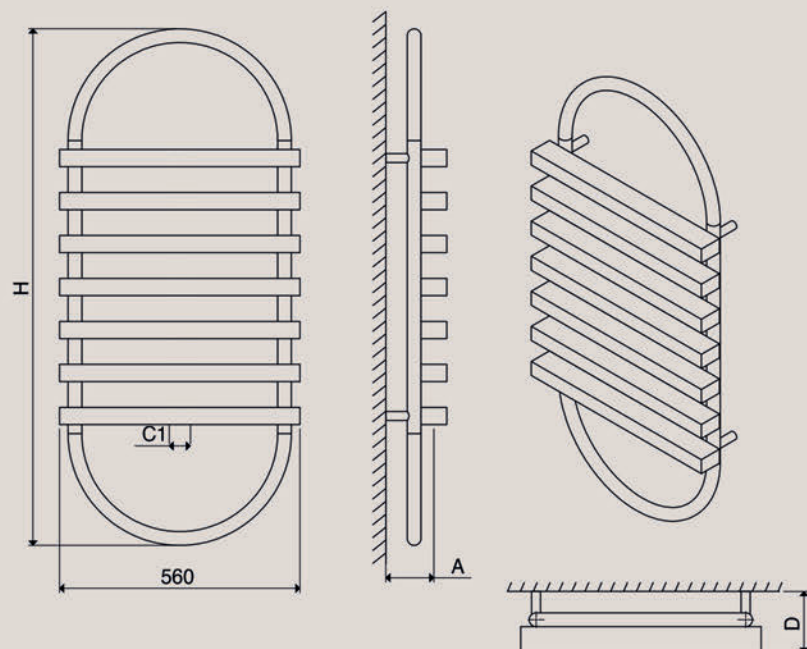
Guarantee
20 Years

Installation
Vertical

PRODUCT CODE	Height (mm) H	Width (mm) W	Sections n	Pipe Centers (mm) C1	Wall to pipe Centers A (mm)	Wall Distance D (mm)	Nett Weight (kg)	Water Content (lt)	Fuel Type	Heat Outputs	
										Watts	BTU
EXD 0560117007	1170	560	7	50	112-127	142-157	7.8	2.9	D	544	1858

Please add finishing code at the end of the product code **Code example : EXD 0560117007 MRP**

Fuel type i.e C: Central Heating
E: Electrical Heating
D: Dual Heating (C+E)



A full range of made to order sizes available.

Please ask for details.

n = number of sections

Max. working pressure

10 bar

Max. working temperature

95 °C

Connections

1/2"

Pipe center

C1

50 mm

KLIPS

Material
Stainless Steel

Stock Finishes
PLS SEE COLOUR
KEY CHART, PAGE 161

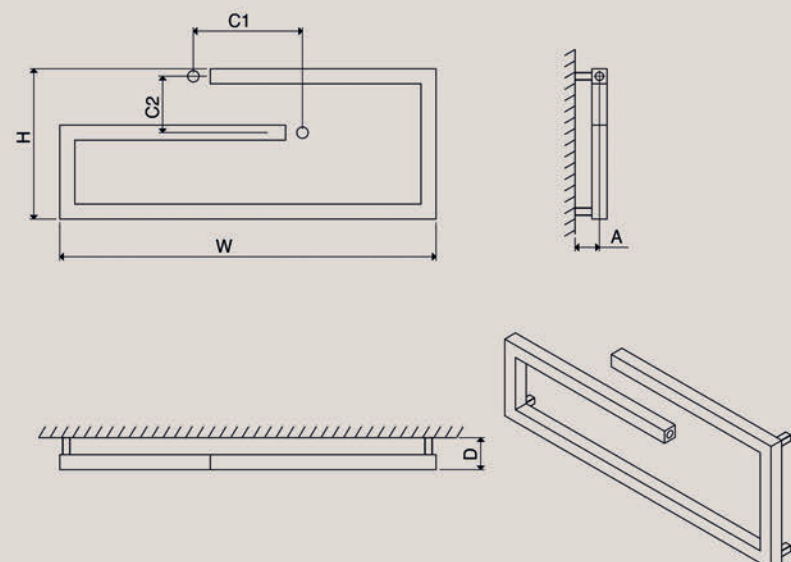
Guarantee
20 Years

Installation
Vertical

PRODUCT CODE	Height (mm) H	Width (mm) W	Sections n	Pipe Centers (mm) C1 C2	Wall to pipe Centers A (mm)	Wall Distance D (mm)	Nett Weight (kg)	Water Content (lt)	Fuel Type	Heat Outputs	
										Watts	BTU
KLP 0400100003	400	1000	3	290 150	65-80	85-105	7.8	2.9	D	365	1246

Please add finishing code at the end of the product code **Code example : EXD 0560117007 STP**

Fuel type i.e C: Central Heating
E: Electrical Heating
D: Dual Heating (C+E)



A full range of made to order sizes available.

Please ask for details.

n = number of sections

Max. working pressure

10 bar

Max. working temperature

95 °C

Connections

1/2"

Pipe center

C2

150 mm

Pipe center

C1

290 mm

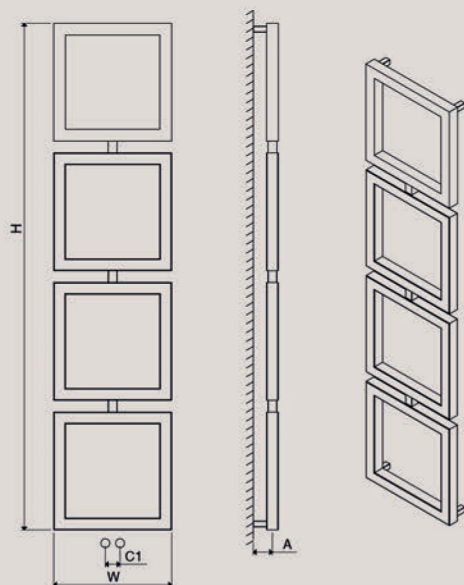
Material	Stock Finishes	Guarantee	Installation
Stainless Steel	PLS SEE COLOUR KEY CHART, PAGE 161	20 Years	Vertical

PRODUCT CODE	Height (mm) H	Width (mm) W	Pipe Centers (mm) C1	Wall to pipe Centers A (mm)	Wall Distance D (mm)	Nett Weight (kg)	Water Content (lt)	Fuel Type	Heat Outputs	
									Watts	BTU
RUM 0400084002	840	400	50	65-85	85-105	10.8	5.1	C	403	1376
RUM 0400128003	1280	400	50	65-85	85-105	15.5	7.7	C	629	2145
RUM 0400172004	1720	400	50	65-85	85-105	15.5	10.2	C	792	2703

Please add finishing code
at the end of the product code

Code example : MAN 04701280 MRP

Fuel type i.e. C: Central heating
E: Electrical heating
D: Dual heating (C+E)



A full range of made to order sizes available.

Please ask for details.

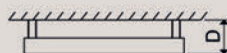
n = number of sections

Max. working pressure 5 bar

Max. working temperature 95 °C

Connections 1/2"

Pipe center C1 50 mm



DEFINITIONS

These Terms and Conditions apply to Carisa Radiators Ltd (company number 09708741) (VAT number 227388681) whose principal place of business is at Unit 5 Meridian Park, Neptune Close, Medway City Estate, Rochester Kent ME2 4LT 'Buyer' and 'you' means any entity engaging in a Contract, Order, or Agreement with Carisa Radiators Limited Contract, Order, Or Agreement, means any Contract, Order, or Agreement between the 'buyer' and Carisa Radiators Limited with regard to the sale of goods or the provision of service subject to these terms and conditions. Any Contract, Order, or Agreement requires Carisa Radiators Limited acceptance. 'Conditions' means the terms and conditions of contract set out in this document and any special terms and conditions additional to those set out herein agreed in writing by Carisa Radiators Ltd. 'Goods' means the articles which the buyer has agreed to purchase from Carisa Radiators Ltd. 'Price' means the price for the provision of services or the goods excluding carriage and VAT.

CONTRACT

Unless otherwise agreed in writing by us, these conditions shall form part of any contract based on an acceptance of this offer and no conditions inconsistent therewith shall, unless expressly agreed in writing by us, be deemed to override or vary these conditions notwithstanding their being proffered by you at a date later than this offer. These conditions shall apply not only to the present transaction but to all future business between us except in such cases as the contrary is expressly agreed in writing between us. All technical data, physical dimensions, capacities and other properties and particulars including drawings are made in good faith as being approximately correct but deviation there from shall not vitiate the contract nor be made the basis of any claim against us.

LEGAL INTERPRETATION

The contract between ourselves and the buyer which is subject to these conditions is to be construed and to take effect as a contract made in England and in accordance with English law and any disputes arising there from shall be determined in the Courts of England or, at our discretion, shall be referred to a single mutually acceptable arbitrator in accordance with the provisions of the Arbitration Act currently in force.

QUOTATIONS

All price quotations given by us are for the buyer's information only. All prices quoted are exclusive of VAT and carriage and any other duties which may become payable. All Quotations are to be regarded as "invitations to treat" only. Rates of VAT charged and other duties which may become payable and rates for carriage will be those current on the date of dispatch to the buyer irrespective of when the contract may have been formed.

PRICES

All prices and terms quoted in our price list or catalogues etc. may be changed by us without notice. All orders are accepted for delivery at the price and on the terms ruling at the date of dispatch. Prices for goods quoted are for goods delivered to a buyer in mainland England and Wales. For all deliveries elsewhere or to remote areas in the UK extra delivery and packaging charges may apply. For all other areas, and for all exports, delivery charges are subject to quotation.

PAYMENT

Unless expressly agreed between us in writing otherwise, all sales are payable net cash with order. For agreed credit accounts our invoices are to be paid within 30 days from the date of the invoice and this time condition is of the essence of the contract. In the event that payment is not made in accordance with the agreed terms, either in full or otherwise, then the whole of the account whether due or not shall become payable and become overdue and be payable forthwith. Furthermore in the event of late or non-payment in accordance with these terms and conditions (or any other terms so agreed in writing), we reserve the right to rely on the Late Payment of Commercial Debts (Interest) Act 1998, as amended by the Late Payment of Commercial Debts Regulations 2002 and charge, at a daily rate, until payment, interest upon the debt then due at the rate prevailing at the date of default (currently 8% above the prevailing Bank of England base rate) together with the late payment charges set out in the Act, until payment or sooner settlement.

TITLE

All goods sold by us whether delivered or installed or not shall remain our sole property until all payments due for the sale or supply of such goods have been paid to us. Until property in goods sold or supplied passes to the buyer the buyer shall be responsible for any damage suffered by the goods and shall take all steps necessary to keep the goods in good condition and repair and shall keep the same in safe custody and shall not improperly use the same and shall not do anything which may lead to the goods being seized by way of distress or any legal process and shall keep the goods comprehensively insured against all risks in their full price and that our interest as unpaid seller is properly recorded in the policy. Further, at all times whilst goods are in the buyer's possession but whilst the title remains vested in us, the buyer shall notify us immediately any defect arises in the condition of the goods and shall at all times allow us access to the goods for purposes of inspection and/or work to the goods and we shall be entitled (but not obliged) to carry out such work and render to the buyer such charges for such work as may be appropriate.

DELIVERY

Any date or period named by us for delivery is given in good faith as an estimate only. Whilst we will endeavor to dispatch within the period stated, such date or period is not to be of the essence of the contract, and the buyer shall be bound to accept the goods ordered when available. Unless we have specifically given an undertaking in writing with an agreed sum as liquidated damages for late delivery and the buyer has suffered loss due to our delay, we shall not be liable in any way in respect of late delivery however caused, and in any event any liability shall be strictly limited to the liquidated sum so specified. Customers within some remote rural areas should note that delivery times may be extended by up to 5 working days, or in some instances not be available. Scottish deliveries are sometimes restricted and deliveries to the following postcodes are subject to additional costs and in some cases not available at all: KW, IV, AB, DD, PH, PA. The various islands around the British Isles are also subject to similar restrictions and additional costs. Please contact Carisa Radiators to confirm costs at time of ordering. Where delivery is fixed by installments, such installments deliverable under the contract shall be deemed to be sold under separate contracts. Defective deliveries of one or more installments shall not entitle the buyer to repudiate the contract with regard to any installments remaining to be delivered. It is our responsibility to load vehicles with goods at our works. Subject to the size and weight of the goods supplied, we will deliver to the nearest hard standing provided safe access is available. Where specification of the goods prevents us from carrying out delivery as outlined above, the buyer is responsible for all necessary material handling arrangements and carrying out the safe offloading of the goods. Any damage sustained during this offloading is the responsibility of the buyer. Transportation from the hard standing unloading area thereafter is wholly the responsibility of the buyer. If, having given to the buyer notice that the goods or any part of them are ready for dispatch, and a delivery date has been agreed between the buyer and the company, we reserve the right to charge for storage in the event of this delivery date being cancelled by the buyer. Furthermore, if we do not receive forwarding instructions to enable us to dispatch within 14 days from the date thereof, the buyer shall take delivery or arrange for storage of the goods, failing which we shall be entitled to store the goods at the buyer's risk and expense, and our invoice for the goods will become immediately due for payment. Where the price includes delivery, we shall repair or replace free of charge goods damaged in transit, or any shortages, provided the buyer sends written notification within 2 days of delivery and the delivery note states that the packaging or product is being accepted with evidence of damage. Delivery notes which are signed free of comment will be deemed to be acceptable and that the products have been delivered in proper and sound condition without visible damage. Where the price does not include delivery – and carriage is provided by the buyer – the buyer shall be responsible for any loss or damage in transit. Carriage or postage on spare parts will be prepaid and charged in full to the buyer. Where express delivery, is requested by the buyer all additional costs will be charged in full to the buyer. The buyer shall inspect the goods immediately on delivery thereof and within 3 days after delivery give notice to us in writing, of any matter or reason whereof, the buyer may allege that the goods are not in accordance with the contract. If the buyer fails to give such notice the goods shall be deemed to be in all respects in accordance with the contract and the buyer shall accept and pay for the same accordingly. Any claims made by the buyer against us under the terms and conditions of our warranty (below) must be substantiated to our satisfaction and we may refuse to replace repair or credit in respect of any alleged faulty part until sufficient evidence of the validity of the claim has been presented. Where delivery is fixed by installments, such installments deliverable under the contract shall be deemed to be sold under separate contracts. Defective deliveries of one or more installments shall not entitle the buyer to repudiate the contract with regard to any installments remaining to be delivered. It is our responsibility to load vehicles with goods at our works. Subject to the size and weight of the goods supplied, we will deliver to the nearest hard standing provided safe access is available. Where specification of the goods prevents us from carrying out delivery as outlined above, the buyer is responsible for all necessary material handling arrangements and carrying out the safe offloading of the goods. Any damage sustained during this offloading is the responsibility of the buyer. Transportation from the hard standing unloading area thereafter is wholly the responsibility of the buyer.

WARRANTY

Our liability in respect of any defect in or failure of the goods or for any loss injury or damage attributed thereto is limited to the cost of replacement of the goods only or the repairing of such defects which under proper use have appeared therein and arise solely from faulty design, materials or workmanship. Replacement goods are chargeable; credits will be applied where it is established that the warranty claim is valid. The period of warranty offered by us varies by product and/or related integrated components the buyer shall be entitled to the same guarantee that we have received and are able to enforce. Replacement parts will be delivered by us, to the buyer. The warranty period for any new replacement parts is limited to twelve months from the date of dispatch, or installation of the part, where said installation is carried out by our service personnel. Where faulty parts are returned to us as part of a warranty claim the original buyer must provide full details e.g. product details, and our original contract reference number along with the faulty part. Faulty goods shall not form the subject of any claim for labour costs or other expenditure incurred by the buyer and we shall not be responsible for any loss or damage arising out of any such fault. Only in exceptional circumstances, and by previous written agreement will we accept back for credit, items which have been supplied against orders or which have been manufactured in accordance with your specifications but have not yet been delivered, provided that the goods to be returned are new in original packaging and unused. Restocking charges will apply. We specifically do not accept liability for financial or consequential losses, expenses or damage occasioned by defects in manufacturing or arising from any other cause. The benefit of this warranty is given to the original buyer of the goods and is not assignable. Any goods supplied by us must be installed in accordance with the law and proof thereof shall be a pre-condition of our liability under our warranty of the goods.

CORROSION RESISTANCE

When commissioning the radiators on an closed heating system it is imperative that the appropriate and adequate inhibitor is introduced to the system to protect both your existing heating products and your new Carisa design products. A proprietary multi metal inhibitor will suffice in most cases but if you are in any doubt please seek professional advice, as incorrect or inadequate protection will render any and all warranties null and void. For aluminium products the Ph balance is critical to the longevity of the product and must be paint aimed at levels between 5.5 & 8.5. We reserve the right to conduct a water test to establish the level of protection provided.

BUYERS LIABILITY

Equipment is supplied only for the purpose for which it is specifically designed and which is clearly defined in the appropriate brochure or manual. We do not accept liability for damage or injury caused as a result of the equipment being used for any other purpose. In view of the many factors outside our control in respect of performance of equipment, the buyer is entirely responsible for the type of equipment purchased and for the capacity of the equipment to deal with the proposed application. We do not accept any liability for incorrect calculations incompatible designs or advice, which may result in the equipment, supplied not being suitable for the purpose for which it was purchased.

INTERPRETATION

All headings in this document are inserted for convenience and each of reference only and shall not affect the construction or interpretation of this contract. Any provision of this contract, which is or may be void or unenforceable shall to the extent of such invalidity or unenforceability be deemed severable and shall not affect any other provision in this contract. No waiver or forbearance by us whether express or implied in enforcing any of our rights under the contract shall prejudice our right to do so in the future. Save as otherwise provided in these Conditions nothing in these Conditions shall create any partnership joint venture or relationship of principal and agent between the parties. Except where expressly provided for in these Conditions time shall not be of the essence of the contract.

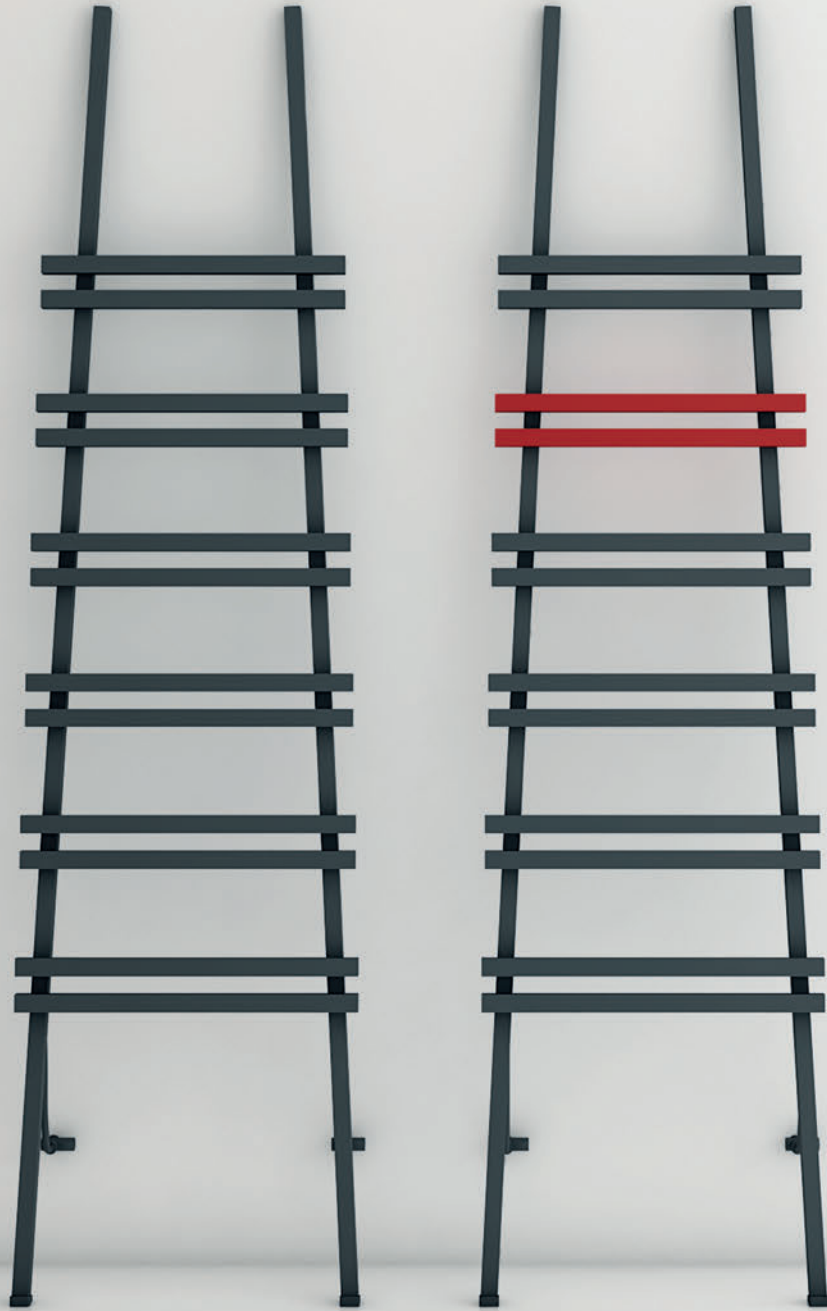
NOTICES

Any Notice required to be given by either party or any account rendered by the Company to the buyer shall be deemed to have been given or rendered if dispatched by first class post and addressed to the buyer at the delivery address or to their respective last known business address or registered office and any such Notice or Account rendered shall be deemed to have been received 2 days after posting as aforesaid. In the alternative to the matters above any Notice required to be given by either party or any account rendered by the Company to the buyer shall be deemed to have been given or rendered if sent by facsimile transmission machine during business hours to the buyer at the facsimile number of the buyer or to the facsimile number at their respective last known business address or registered office and any such Notice or Account rendered shall be deemed to have been received if a facsimile transmission confirmation produced by such machine shows due and proper transmission.

FORCE MAJEURE

The performance of all contracts is subject to variation or cancellation by us without notice owing to any Act of God, war, strikes, lock-outs, fire, flood, drought, tempest or any other cause beyond the control of our Company or owing to any inability of the Company to procure materials or articles required for the performance of the contract and we shall not be held responsible for any inability to deliver caused by any such contingency.

All Heat outputs are indicated at $\Delta T70$ in compliance with BSEN 442. A list of correction factors is available in our specification pages to calculate the heat outputs in a range of regimes.



Carisa - Turkey

Feneryolu Mahallesi Bağdat Caddesi No:126/A Kadıköy / İstanbul - TÜRKİYE

+90 444 6 586

www.carisa.com.tr

info@carisa.com.tr

Carisa - Russia

Syromyatnicheskaya Nijnaya Street 10 Building 7.1st Floor, 1st Section, Office 14/15 Moscow - RUSSIA

+7 (915) 125 10 68

www.carisa.ru

info@carisa.ru

Carisa - United Kingdom

Unit 5 Meridian Park, Neptune Close, Medway City Estate, Rochester KENT, ME2 4LT UNITED KINGDOM

+44 (0)1634 711577

www.carisa.co.uk

info@carisa.co.uk